

# Geberit HDPE Product Guide

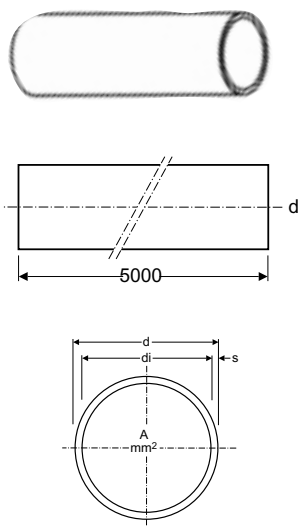


Geberit HDPE waste  
drainage system  
Pipes - Fittings - Tools

## Index

|                                       |         |
|---------------------------------------|---------|
| Pipes, Reducers                       | 2 - 3   |
| Bends                                 | 4 - 5   |
| Branch Fittings                       | 6 - 9   |
| Access Pipes                          | 9       |
| Ball Fittings                         | 10 - 11 |
| Electroweld Sleeve Couplings          | 12      |
| Expansion Sockets / Ring-seal Sockets | 13      |
| Flanges                               | 14 - 15 |
| Screw-threaded Joints                 | 16 - 17 |
| Adaptors to different pipe materials  | 18 - 20 |
| Contraction Sleeves / Protection Caps | 20 - 21 |
| Attachments / Brackets                | 22 - 23 |
| Floor Drains                          | 24 - 25 |
| Floor Drain Varino / Dilution Traps   | 26 - 27 |
| Traps                                 | 28 - 29 |
| WC Pan Connectors                     | 30 - 31 |
| Laboratory Wastes                     | 32 - 33 |
| Geberit Tools                         | 34 - 39 |

## Pipes Concentric reducers

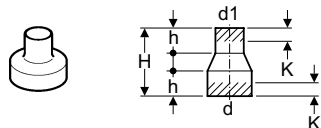


### Pipes

| d          | di    |   | Amm2  | s   | PN   | Art. No             |
|------------|-------|---|-------|-----|------|---------------------|
| <b>32</b>  | 26    | ▲ | 531   | 3   | 10.3 | <b>379.000.16.0</b> |
| <b>40</b>  | 34    | ▲ | 908   | 3   | 8.1  | <b>360.000.16.0</b> |
| <b>50</b>  | 44    | ▲ | 908   | 3   | 6.4  | <b>361.000.16.0</b> |
| <b>56</b>  | 50    | ▲ | 1963  | 3   | 5.7  | <b>363.000.16.0</b> |
| <b>63</b>  | 57    | ▲ | 2552  | 3   | 5    | <b>364.000.16.0</b> |
| <b>75</b>  | 69    | ▲ | 3739  | 3   | 4.1  | <b>365.000.16.0</b> |
| <b>90</b>  | 83    | ▲ | 5411  | 3.5 | 4    | <b>366.000.16.0</b> |
| <b>110</b> | 101.4 | ▲ | 8075  | 4.3 | 4    | <b>367.000.16.0</b> |
| <b>125</b> | 115.2 | ▲ | 10423 | 4.9 | 4    | <b>368.000.16.0</b> |
| <b>160</b> | 147.6 | ▲ | 17110 | 6.2 | 4    | <b>369.000.16.0</b> |
| <b>200</b> | 187.6 | ▲ | 27641 | 6.2 | 3.2  | <b>370.000.16.0</b> |
| <b>250</b> | 234.4 | ▲ | 43152 | 7.8 | 3.2  | <b>371.000.16.0</b> |
| <b>315</b> | 295.4 | ▲ | 68535 | 9.8 | 3.2  | <b>372.000.16.0</b> |

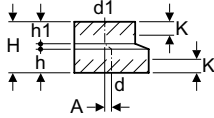
Standard length 5000 mm

### Concentric reducers



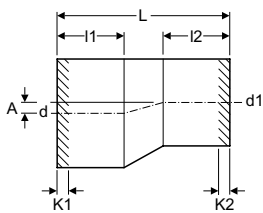
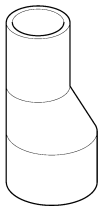
| d          | d1  | H  | h   | K   |   | Art. No.            |
|------------|-----|----|-----|-----|---|---------------------|
| <b>40</b>  | 32  | 80 | 30  | 15  | ○ | <b>360.557.16.1</b> |
| <b>50</b>  | 32  | 80 | 30  | 15  | ○ | <b>361.557.16.1</b> |
|            | 40  | 80 | 30  | 15  | ○ | <b>361.559.16.1</b> |
| <b>56</b>  | 40  | 80 | 30  | 15  | ○ | <b>363.559.16.1</b> |
|            | 50  | 80 | 30  | 15  | ○ | <b>363.560.16.1</b> |
| <b>63</b>  | 40  | 80 | 30  | 15  | ○ | <b>364.559.16.1</b> |
|            | 50  | 80 | 30  | 15  | ○ | <b>364.560.16.1</b> |
|            | 56  | 80 | 30  | 15  | ○ | <b>364.565.16.1</b> |
| <b>75</b>  | 40  | 80 | 30  | 15  | ○ | <b>365.559.16.1</b> |
|            | 50  | 80 | 30  | 15  | ○ | <b>365.560.16.1</b> |
|            | 56  | 80 | 30  | 15  | ○ | <b>365.565.16.1</b> |
|            | 63  | 80 | 30  | 15  | ○ | <b>365.570.16.1</b> |
| <b>90</b>  | 40  | 80 | 30  | 15  | ○ | <b>366.559.16.1</b> |
|            | 50  | 80 | 30  | 15  | ○ | <b>366.560.16.1</b> |
|            | 56  | 80 | 30  | 15  | ○ | <b>366.565.16.1</b> |
|            | 63  | 80 | 30  | 15  | ○ | <b>366.570.16.1</b> |
|            | 75  | 80 | 30  | 15  | ○ | <b>366.575.16.1</b> |
| <b>110</b> | 40  | 80 | 30  | 15  | ○ | <b>367.559.16.1</b> |
|            | 50  | 80 | 30  | 15  | ○ | <b>367.560.16.1</b> |
|            | 56  | 80 | 30  | 15  | ○ | <b>367.565.16.1</b> |
|            | 63  | 80 | 30  | 15  | ○ | <b>367.570.16.1</b> |
|            | 75  | 80 | 30  | 15  | ○ | <b>367.575.16.1</b> |
|            | 90  | 80 | 30  | 15  | ○ | <b>367.580.16.1</b> |
| <b>125</b> | 63  | 80 | 30  | 15  | ○ | <b>368.570.16.1</b> |
|            | 75  | 80 | 30  | 15  | ○ | <b>368.575.16.1</b> |
|            | 90  | 80 | 30  | 15  | ○ | <b>368.580.16.1</b> |
|            | 110 | 80 | 30  | 15  | ○ | <b>368.585.16.1</b> |
| <b>160</b> | 110 | 40 | N/A | N/A | ○ | <b>369.535.16.1</b> |

## Eccentric reducers



### Short eccentric reducers

| d          | d1  | A    | H  | h  | h1 | K  | Art. No.              |
|------------|-----|------|----|----|----|----|-----------------------|
| <b>50</b>  | 40  | 5    | 80 | 35 | 37 | 20 | ○ <b>361.558.16.1</b> |
| <b>56</b>  | 40  | 8    | 80 | 35 | 37 | 20 | ○ <b>363.558.16.1</b> |
|            | 50  | 3    | 80 | 35 | 37 | 20 | ○ <b>363.561.16.1</b> |
| <b>63</b>  | 40  | 11.5 | 80 | 35 | 37 | 20 | ○ <b>364.558.16.1</b> |
|            | 50  | 6    | 80 | 35 | 37 | 20 | ○ <b>364.561.16.1</b> |
|            | 56  | 3    | 80 | 35 | 37 | 20 | ○ <b>364.566.16.1</b> |
| <b>75</b>  | 40  | 17.5 | 80 | 35 | 37 | 20 | ○ <b>365.558.16.1</b> |
|            | 50  | 12   | 80 | 35 | 37 | 20 | ○ <b>365.561.16.1</b> |
|            | 56  | 10   | 80 | 35 | 37 | 20 | ○ <b>365.566.16.1</b> |
|            | 63  | 6    | 80 | 35 | 37 | 20 | ○ <b>365.571.16.1</b> |
| <b>90</b>  | 50  | 20   | 80 | 35 | 37 | 20 | ○ <b>366.561.16.1</b> |
|            | 56  | 16   | 80 | 35 | 37 | 20 | ○ <b>366.566.16.1</b> |
|            | 63  | 13   | 80 | 35 | 37 | 20 | ○ <b>366.571.16.1</b> |
|            | 75  | 7    | 80 | 35 | 37 | 20 | ○ <b>366.576.16.1</b> |
| <b>110</b> | 40  | 34   | 80 | 35 | 37 | 20 | ○ <b>367.558.16.1</b> |
|            | 50  | 29   | 80 | 35 | 37 | 20 | ○ <b>367.561.16.1</b> |
|            | 56  | 26   | 80 | 35 | 37 | 20 | ○ <b>367.566.16.1</b> |
|            | 63  | 22   | 80 | 35 | 37 | 20 | ○ <b>367.571.16.1</b> |
|            | 75  | 16   | 80 | 35 | 37 | 20 | ○ <b>367.576.16.1</b> |
|            | 90  | 9    | 80 | 35 | 37 | 20 | ○ <b>367.581.16.1</b> |
| <b>125</b> | 50  | 36   | 80 | 35 | 37 | 20 | ○ <b>368.561.16.1</b> |
|            | 56  | 33   | 80 | 35 | 37 | 20 | ○ <b>368.566.16.1</b> |
|            | 63  | 29   | 80 | 35 | 37 | 20 | ○ <b>368.571.16.1</b> |
|            | 75  | 23   | 80 | 35 | 37 | 20 | ○ <b>368.576.16.1</b> |
|            | 90  | 16   | 80 | 35 | 37 | 20 | ○ <b>368.581.16.1</b> |
|            | 110 | 7    | 80 | 35 | 37 | 20 | ○ <b>368.586.16.1</b> |
| <b>160</b> | 110 | 23   | 80 | 35 | 37 | 20 | ○ <b>369.586.16.1</b> |
|            | 125 | 16   | 80 | 35 | 37 | 20 | ○ <b>369.588.16.1</b> |



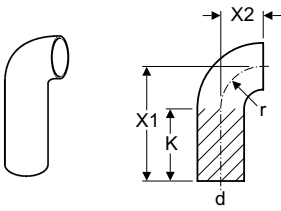
### Long eccentric reducers

| d          | d1  | A  | L   | l1  | l2  | K1  | K2  | Art. No.               |
|------------|-----|----|-----|-----|-----|-----|-----|------------------------|
| <b>125</b> | 110 | 7  | 160 | 70  | 64  | 50  | 50  | ▲ <b>368.584.16.1</b>  |
| <b>160</b> | 110 | 25 | 280 | 94  | 64  | 80  | 50  | ▲ <b>369.584.16.1</b>  |
|            | 125 | 17 | 240 | 94  | 80  | 80  | 70  | ▲ <b>369.587.16.1</b>  |
| <b>200</b> | 110 | 45 | 455 | 157 | 64  | 100 | 20  | ○● <b>370.584.16.1</b> |
|            | 125 | 37 | 415 | 157 | 80  | 100 | 30  | ▲ <b>370.587.16.1</b>  |
|            | 160 | 20 | 325 | 157 | 93  | 100 | 40  | ▲ <b>370.594.16.1</b>  |
| <b>250</b> | 200 | 25 | 405 | 158 | 157 | 100 | 100 | ▲ <b>371.596.16.1</b>  |
| <b>315</b> | 200 | 57 | 580 | 161 | 157 | 100 | 100 | ▲ <b>372.596.16.1</b>  |
|            | 250 | 32 | 435 | 161 | 157 | 100 | 100 | ▲ <b>372.598.16.1</b>  |

- Buttweld      ▲ Either  
 ● Electroweld      ○● Requires a combination of both (see page 40)

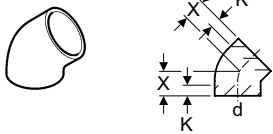
All dimensions in millimetres unless otherwise stated.

## Bends



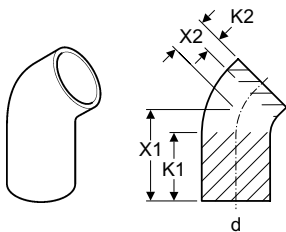
### Bends 90° with long tail

| d          | X1  | X2  | K   | r   |    | Art. No.            |
|------------|-----|-----|-----|-----|----|---------------------|
| <b>32</b>  | 100 | 30  | 70  | 30  | ○● | <b>379.055.16.1</b> |
| <b>40</b>  | 150 | 30  | 120 | 30  | ○● | <b>360.055.16.1</b> |
| <b>50</b>  | 180 | 40  | 140 | 40  | ○● | <b>361.055.16.1</b> |
| <b>56</b>  | 210 | 40  | 170 | 40  | ○● | <b>363.055.16.1</b> |
| <b>63</b>  | 210 | 50  | 160 | 50  | ○● | <b>364.055.16.1</b> |
| <b>75</b>  | 210 | 70  | 140 | 70  | ○● | <b>365.055.16.1</b> |
| <b>90</b>  | 240 | 90  | 150 | 90  | ○● | <b>366.055.16.1</b> |
| <b>110</b> | 270 | 100 | 170 | 100 | ○● | <b>367.055.16.1</b> |
| <b>125</b> | 200 | 110 | 90  | 110 | ○● | <b>368.055.16.1</b> |
| <b>160</b> | 200 | 140 | 60  | 140 | ○● | <b>369.055.16.1</b> |



### Bends 135° (45°)

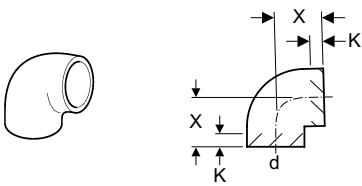
| d          | X  | K  |   | Art. No.            |
|------------|----|----|---|---------------------|
| <b>40</b>  | 40 | 20 | ○ | <b>360.045.16.1</b> |
| <b>50</b>  | 45 | 20 | ○ | <b>361.045.16.1</b> |
| <b>56</b>  | 45 | 20 | ○ | <b>363.045.16.1</b> |
| <b>63</b>  | 50 | 20 | ○ | <b>364.045.16.1</b> |
| <b>75</b>  | 50 | 20 | ○ | <b>365.045.16.1</b> |
| <b>90</b>  | 55 | 20 | ○ | <b>366.045.16.1</b> |
| <b>110</b> | 60 | 25 | ○ | <b>367.045.16.1</b> |
| <b>125</b> | 65 | 25 | ○ | <b>368.045.16.1</b> |
| <b>160</b> | 69 | 20 | ○ | <b>369.045.16.1</b> |



### Bend 135° (45°) with long tail

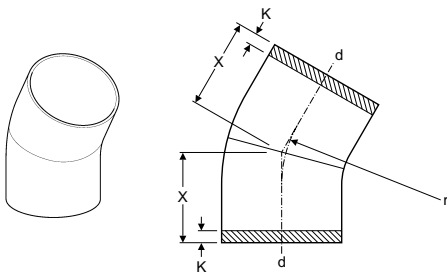
| d          | X1  | X2 | K1  | K2 |    | Art. No.            |
|------------|-----|----|-----|----|----|---------------------|
| <b>75</b>  | 91  | 50 | 60  | 20 | ○● | <b>365.046.16.1</b> |
| <b>110</b> | 147 | 60 | 110 | 25 | ○● | <b>367.046.16.1</b> |

## Bends



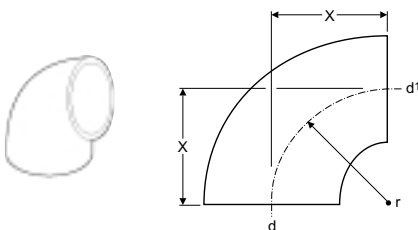
### Bends 91½° (88½°)

| d          | X   | K  |   | Art. No.            |
|------------|-----|----|---|---------------------|
| <b>50</b>  | 60  | 20 | ○ | <b>361.088.16.1</b> |
| <b>56</b>  | 65  | 20 | ○ | <b>363.088.16.1</b> |
| <b>63</b>  | 70  | 20 | ○ | <b>364.088.16.1</b> |
| <b>75</b>  | 75  | 20 | ○ | <b>365.088.16.1</b> |
| <b>90</b>  | 80  | 20 | ○ | <b>366.088.16.1</b> |
| <b>110</b> | 95  | 25 | ○ | <b>367.088.16.1</b> |
| <b>125</b> | 100 | 25 | ○ | <b>368.088.16.1</b> |
| <b>160</b> | 120 | 25 | ○ | <b>369.088.16.1</b> |



### Long turn butt welded bends 150°, 135°, 90° (30°, 45°, 90°)

| d          | X   | K  | r   |              | Art. No.            |
|------------|-----|----|-----|--------------|---------------------|
| <b>200</b> | 150 | 75 | 200 | 150° (30°) ▲ | <b>370.030.16.1</b> |
| <b>250</b> | 160 | 30 | 420 | 150° (30°) ○ | <b>371.030.16.1</b> |
| <b>315</b> | 170 | 30 | 473 | 150° (30°) ○ | <b>372.030.16.1</b> |
| <b>200</b> | 180 | 75 | 200 | 135° (45°) ▲ | <b>370.045.16.1</b> |
| <b>250</b> | 165 | 30 | 290 | 135° (45°) ○ | <b>371.045.16.1</b> |
| <b>315</b> | 180 | 30 | 325 | 135° (45°) ○ | <b>372.045.16.1</b> |
| <b>200</b> | 300 | 75 | 200 | 90° ▲        | <b>370.055.16.1</b> |
| <b>250</b> | 335 | 30 | 290 | 90° ○        | <b>371.055.16.1</b> |
| <b>315</b> | 370 | 30 | 325 | 90° ○        | <b>372.055.16.1</b> |



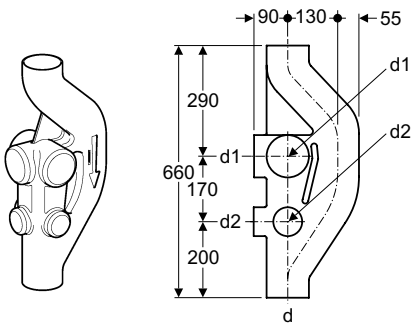
### Bends 90° reduced

| d         | d1 | X  | r  |   | Art. No.            |
|-----------|----|----|----|---|---------------------|
| <b>50</b> | 40 | 40 | 40 | ○ | <b>361.872.16.1</b> |
| <b>56</b> | 50 | 40 | 40 | ○ | <b>363.873.16.1</b> |
| <b>63</b> | 50 | 50 | 50 | ○ | <b>364.873.16.1</b> |
| <b>63</b> | 56 | 50 | 50 | ○ | <b>364.874.16.1</b> |

- Buttweld
- Electroweld
- ▲ Either
- Requires a combination of both (see page 40)

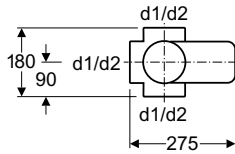
All dimensions in millimetres unless otherwise stated.

## Branch fittings



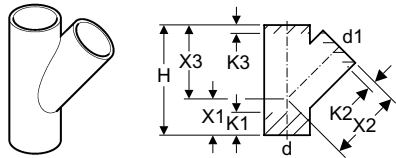
### Sovent Branch 110mm with 6 capped branch connections

| d          | d1  | d2(mm) |   | Art. No.            |
|------------|-----|--------|---|---------------------|
| <b>110</b> | 110 | 75     | ○ | <b>367.611.16.1</b> |

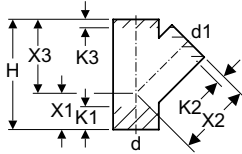
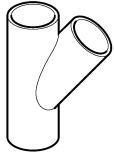


### Y-branch fittings 135° (45°)

| d          | d1  | X2  | X3  | H   | K1  | K2  | K3 |    | Art. No.            |
|------------|-----|-----|-----|-----|-----|-----|----|----|---------------------|
| <b>32</b>  | 32  | 35  | 70  | 70  | 105 | 20  | 20 | ○  | <b>379.108.16.1</b> |
| <b>40</b>  | 32  | 45  | 90  | 90  | 135 | 30  | 35 | ▲  | <b>360.108.16.1</b> |
|            | 40  | 45  | 90  | 90  | 135 | 25  | 30 | ○● | <b>360.109.16.1</b> |
| <b>50</b>  | 40  | 55  | 110 | 110 | 165 | 40  | 45 | ▲  | <b>361.109.16.1</b> |
|            | 50  | 55  | 110 | 110 | 165 | 35  | 20 | ○● | <b>361.112.16.1</b> |
| <b>56</b>  | 50  | 60  | 120 | 120 | 180 | 40  | 30 | ▲  | <b>363.112.16.1</b> |
|            | 56  | 60  | 120 | 120 | 180 | 40  | 25 | ○● | <b>363.115.16.1</b> |
| <b>63</b>  | 40  | 65  | 130 | 130 | 195 | 45  | 45 | ▲  | <b>364.109.16.1</b> |
|            | 50  | 65  | 130 | 130 | 195 | 50  | 30 | ▲  | <b>364.112.16.1</b> |
|            | 56  | 65  | 130 | 130 | 195 | 45  | 25 | ○● | <b>364.115.16.1</b> |
|            | 63  | 65  | 130 | 130 | 195 | 40  | 20 | ○● | <b>364.120.16.1</b> |
| <b>75</b>  | 40  | 70  | 140 | 140 | 210 | 65  | 50 | ▲  | <b>365.109.16.1</b> |
|            | 50  | 70  | 140 | 140 | 210 | 60  | 30 | ▲  | <b>365.112.16.1</b> |
|            | 56  | 70  | 140 | 140 | 210 | 55  | 25 | ○● | <b>365.115.16.1</b> |
|            | 63  | 70  | 140 | 140 | 210 | 45  | 25 | ○● | <b>365.120.16.1</b> |
| <b>90</b>  | 75  | 70  | 140 | 140 | 210 | 40  | 25 | ○● | <b>365.125.16.1</b> |
|            | 40  | 80  | 160 | 160 | 240 | 75  | 55 | ▲  | <b>366.109.16.1</b> |
|            | 50  | 80  | 160 | 160 | 240 | 80  | 40 | ▲  | <b>366.112.16.1</b> |
|            | 56  | 80  | 160 | 160 | 240 | 75  | 35 | ▲  | <b>366.115.16.1</b> |
| <b>110</b> | 63  | 80  | 160 | 160 | 240 | 70  | 30 | ▲  | <b>366.120.16.1</b> |
|            | 75  | 80  | 160 | 160 | 240 | 65  | 30 | ▲  | <b>366.125.16.1</b> |
|            | 90  | 80  | 160 | 160 | 240 | 50  | 20 | ○● | <b>366.130.16.1</b> |
|            | 40  | 90  | 180 | 180 | 270 | 95  | 60 | ▲  | <b>367.109.16.1</b> |
| <b>125</b> | 50  | 90  | 180 | 180 | 270 | 95  | 50 | ▲  | <b>367.112.16.1</b> |
|            | 56  | 90  | 180 | 180 | 270 | 90  | 40 | ▲  | <b>367.115.16.1</b> |
|            | 63  | 90  | 180 | 180 | 270 | 85  | 35 | ▲  | <b>367.120.16.1</b> |
|            | 75  | 90  | 180 | 180 | 270 | 75  | 30 | ▲  | <b>367.125.16.1</b> |
| <b>160</b> | 90  | 90  | 180 | 180 | 270 | 65  | 25 | ○● | <b>367.130.16.1</b> |
|            | 110 | 90  | 180 | 180 | 270 | 55  | 20 | ○● | <b>367.135.16.1</b> |
|            | 63  | 100 | 200 | 200 | 300 | 105 | 45 | ▲  | <b>368.120.16.1</b> |
|            | 75  | 100 | 200 | 200 | 300 | 95  | 40 | ▲  | <b>368.125.16.1</b> |
| <b>160</b> | 90  | 100 | 200 | 200 | 300 | 30  | 30 | ▲  | <b>368.130.16.1</b> |
|            | 110 | 100 | 200 | 200 | 300 | 25  | 25 | ○  | <b>368.135.16.1</b> |
|            | 125 | 100 | 200 | 200 | 300 | 20  | 20 | ○  | <b>368.139.16.1</b> |
|            | 75  | 125 | 250 | 250 | 375 | 65  | 65 | ▲  | <b>369.125.16.1</b> |
| <b>160</b> | 90  | 125 | 250 | 250 | 375 | 55  | 55 | ▲  | <b>369.130.16.1</b> |
|            | 110 | 125 | 250 | 250 | 375 | 45  | 45 | ▲  | <b>369.135.16.1</b> |
|            | 125 | 125 | 250 | 250 | 375 | 40  | 40 | ▲  | <b>369.139.16.1</b> |
|            | 160 | 125 | 250 | 250 | 375 | 25  | 25 | ○  | <b>369.145.16.1</b> |

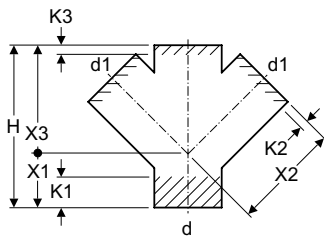
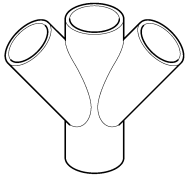


# Branch fittings



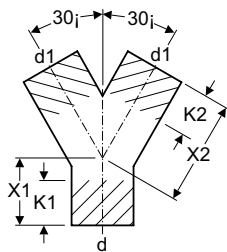
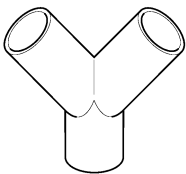
## Y-branch fittings 135° (45°)

| d          | d1  | X1  | X2  | X3  | H   | K1  | K2  | K3  | Art. No.            |                     |
|------------|-----|-----|-----|-----|-----|-----|-----|-----|---------------------|---------------------|
| <b>200</b> | 75  | 180 | 360 | 360 | 540 | 160 | 150 | 80  | ▲                   | <b>370.125.16.1</b> |
|            | 110 | 180 | 360 | 360 | 540 | 150 | 140 | 65  | ○●                  | <b>370.135.16.1</b> |
|            | 125 | 180 | 360 | 360 | 540 | 140 | 130 | 55  | ○●                  | <b>370.139.16.1</b> |
|            | 160 | 180 | 360 | 360 | 540 | 115 | 85  | 35  | ○●                  | <b>370.145.16.1</b> |
|            | 200 | 180 | 360 | 360 | 540 | 85  | 10  | 10  | ○●                  | <b>370.146.16.1</b> |
| <b>250</b> | 110 | 220 | 440 | 440 | 660 | 215 | 185 | 150 | ▲                   | <b>371.135.16.1</b> |
|            | 125 | 220 | 440 | 440 | 660 | 205 | 175 | 140 | ▲                   | <b>371.139.16.1</b> |
|            | 160 | 220 | 440 | 440 | 660 | 180 | 130 | 50  | ○●                  | <b>371.145.16.1</b> |
|            | 200 | 220 | 440 | 440 | 660 | 150 | 50  | 90  | ○●                  | <b>371.146.16.1</b> |
|            | 250 | 220 | 440 | 440 | 660 | 115 | 55  | 55  | ○●                  | <b>371.147.16.1</b> |
| <b>315</b> | 110 | 280 | 560 | 560 | 840 | 305 | 260 | 235 | ▲                   | <b>372.135.16.1</b> |
|            | 125 | 280 | 560 | 560 | 840 | 290 | 250 | 220 | ▲                   | <b>372.139.16.1</b> |
|            | 160 | 280 | 560 | 560 | 840 | 270 | 205 | 200 | ▲                   | <b>372.145.16.1</b> |
|            | 200 | 280 | 560 | 560 | 840 | 240 | 125 | 175 | ▲                   | <b>372.146.16.1</b> |
|            | 250 | 280 | 560 | 560 | 840 | 205 | 130 | 140 | ▲                   | <b>372.147.16.1</b> |
| 315        | 280 | 560 | 560 | 840 | 160 | 95  | 95  | ▲   | <b>372.148.16.1</b> |                     |



## Double-Y-branch fitting

| d          | d1  | X1 | X2  | X3  | H   | K1 | K2 | K3 | Art. No. |                     |
|------------|-----|----|-----|-----|-----|----|----|----|----------|---------------------|
| <b>110</b> | 40  | 90 | 180 | 180 | 270 | 95 | 60 | 75 | ▲        | <b>367.209.16.1</b> |
|            | 50  | 90 | 180 | 180 | 270 | 95 | 60 | 75 | ▲        | <b>367.212.16.1</b> |
|            | 110 | 90 | 180 | 180 | 270 | 50 | 15 | 15 | ○●       | <b>367.235.16.1</b> |



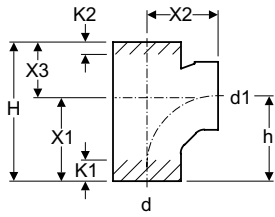
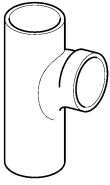
## Double-Y branches 60°

| d          | d1  | X1 | X2  | K1 | K2 | Art. No. |                     |
|------------|-----|----|-----|----|----|----------|---------------------|
| <b>50</b>  | 40  | 55 | 110 | 40 | 50 | ▲        | <b>361.459.16.1</b> |
|            | 50  | 55 | 110 | 30 | 40 | ▲        | <b>361.462.16.1</b> |
| <b>56</b>  | 50  | 60 | 120 | 40 | 50 | ▲        | <b>363.462.16.1</b> |
|            | 56  | 18 | 53  | -  | -  | ○        | <b>363.465.16.1</b> |
| <b>63</b>  | 50  | 65 | 130 | 50 | 60 | ▲        | <b>364.462.16.1</b> |
|            | 56  | 65 | 130 | 40 | 60 | ▲        | <b>364.465.16.1</b> |
| <b>75</b>  | 56  | 70 | 140 | 60 | 70 | ▲        | <b>365.465.16.1</b> |
|            | 63  | 70 | 140 | 50 | 60 | ▲        | <b>365.470.16.1</b> |
| <b>110</b> | 90  | 90 | 180 | 70 | 70 | ▲        | <b>367.480.16.1</b> |
|            | 110 | 90 | 102 | -  | -  | ○        | <b>367.481.16.1</b> |

- Buttweld
- Electroweld
- ▲ Either
- Requires a combination of both (see page 40)

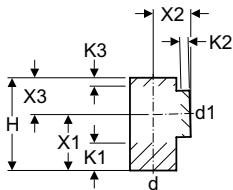
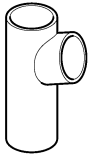
All dimensions in millimetres unless otherwise stated.

## Branch fittings



### Branch fitting 91½° (Swept-Entry, 88½°)

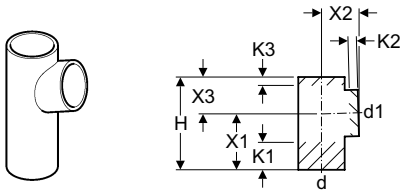
| d          | d1  | X1  | X2  | X3 | H   | h   | K1 | K2 | Art. No.               |
|------------|-----|-----|-----|----|-----|-----|----|----|------------------------|
| <b>110</b> | 110 | 135 | 115 | 90 | 225 | 138 | 35 | 20 | ○● <b>367.163.16.1</b> |



### Branch fittings 91½° (88½°)

| d          | d1         | X1  | X2  | X3  | H   | K1  | K2  | K3                    | Art. No.               |                        |
|------------|------------|-----|-----|-----|-----|-----|-----|-----------------------|------------------------|------------------------|
| <b>32</b>  | 32         | 50  | 35  | 35  | 85  | 25  | 10  | 10                    | ○ <b>379.158.16.1</b>  |                        |
| <b>40</b>  | 32         | 75  | 55  | 55  | 130 | 50  | 25  | 20                    | ○● <b>360.158.16.1</b> |                        |
|            | 40         | 75  | 55  | 55  | 130 | 45  | 25  | 25                    | ○● <b>360.159.16.1</b> |                        |
| <b>50</b>  | 40         | 90  | 60  | 60  | 150 | 60  | 25  | 30                    | ○● <b>361.159.16.1</b> |                        |
|            | 50         | 90  | 60  | 60  | 150 | 50  | 25  | 25                    | ○● <b>361.162.16.1</b> |                        |
| <b>56</b>  | 50         | 105 | 70  | 70  | 175 | 70  | 30  | 35                    | ▲ <b>363.162.16.1</b>  |                        |
|            | 56         | 105 | 70  | 70  | 175 | 65  | 30  | 30                    | ▲ <b>363.165.16.1</b>  |                        |
| <b>63</b>  | 40         | 105 | 70  | 70  | 175 | 70  | 30  | 30                    | ▲ <b>364.159.16.1</b>  |                        |
|            | 50         | 105 | 70  | 70  | 175 | 70  | 30  | 35                    | ▲ <b>364.162.16.1</b>  |                        |
|            | 56         | 105 | 70  | 70  | 175 | 65  | 30  | 30                    | ▲ <b>364.165.16.1</b>  |                        |
| <b>63</b>  | 63         | 105 | 70  | 70  | 175 | 60  | 30  | 30                    | ▲ <b>364.170.16.1</b>  |                        |
|            | <b>75</b>  | 40  | 105 | 70  | 70  | 175 | 75  | 25                    | 40                     | ○● <b>365.159.16.1</b> |
|            |            | 50  | 105 | 70  | 70  | 175 | 70  | 25                    | 35                     | ○● <b>365.162.16.1</b> |
| <b>63</b>  | 56         | 105 | 70  | 70  | 175 | 65  | 25  | 30                    | ○● <b>365.165.16.1</b> |                        |
|            | 63         | 105 | 70  | 70  | 175 | 60  | 25  | 25                    | ○● <b>365.170.16.1</b> |                        |
|            | 75         | 105 | 70  | 70  | 175 | 55  | 25  | 25                    | ○● <b>365.175.16.1</b> |                        |
| <b>90</b>  | 40         | 120 | 80  | 80  | 200 | 85  | 25  | 45                    | ○● <b>366.159.16.1</b> |                        |
|            | 50         | 120 | 80  | 80  | 200 | 85  | 25  | 45                    | ○● <b>366.162.16.1</b> |                        |
|            | 56         | 120 | 80  | 80  | 200 | 80  | 25  | 40                    | ○● <b>366.165.16.1</b> |                        |
|            | 63         | 120 | 80  | 80  | 200 | 75  | 25  | 35                    | ○● <b>366.170.16.1</b> |                        |
|            | 75         | 120 | 80  | 80  | 200 | 70  | 25  | 30                    | ○● <b>366.175.16.1</b> |                        |
|            | 90         | 120 | 80  | 80  | 200 | 65  | 25  | 25                    | ○● <b>366.180.16.1</b> |                        |
| <b>110</b> | 40         | 135 | 90  | 90  | 225 | 100 | 25  | 60                    | ○● <b>367.159.16.1</b> |                        |
|            | 50         | 135 | 90  | 90  | 225 | 95  | 25  | 50                    | ○● <b>367.162.16.1</b> |                        |
|            | 56         | 135 | 90  | 90  | 225 | 90  | 25  | 45                    | ○● <b>367.165.16.1</b> |                        |
|            | 63         | 135 | 90  | 90  | 225 | 90  | 25  | 40                    | ○● <b>367.170.16.1</b> |                        |
|            | 75         | 135 | 90  | 90  | 225 | 85  | 25  | 35                    | ○● <b>367.175.16.1</b> |                        |
|            | 90         | 135 | 90  | 90  | 225 | 75  | 25  | 30                    | ○● <b>367.180.16.1</b> |                        |
| <b>110</b> | 110        | 135 | 90  | 90  | 225 | 65  | 20  | 20                    | ○● <b>367.185.16.1</b> |                        |
|            | <b>125</b> | 50  | 150 | 100 | 100 | 250 | 110 | 25                    | 60                     | ○● <b>368.162.16.1</b> |
|            |            | 56  | 150 | 100 | 100 | 250 | 105 | 25                    | 55                     | ○● <b>368.165.16.1</b> |
|            | 63         | 150 | 100 | 100 | 250 | 105 | 25  | 50                    | ○● <b>368.170.16.1</b> |                        |
|            | 75         | 150 | 100 | 100 | 250 | 100 | 25  | 45                    | ○● <b>368.175.16.1</b> |                        |
|            | 90         | 150 | 100 | 100 | 250 | 90  | 25  | 40                    | ○● <b>368.180.16.1</b> |                        |
| <b>110</b> | 110        | 150 | 100 | 100 | 250 | 80  | 20  | 30                    | ○● <b>368.185.16.1</b> |                        |
|            | 125        | 150 | 100 | 100 | 250 | 70  | 20  | 20                    | ○● <b>368.189.16.1</b> |                        |
|            | <b>160</b> | 75  | 210 | 140 | 140 | 350 | 150 | 45                    | 80                     | ▲ <b>369.175.16.1</b>  |
| 110        |            | 210 | 140 | 140 | 350 | 135 | 45  | 60                    | ▲ <b>369.185.16.1</b>  |                        |
| 125        | 210        | 140 | 140 | 350 | 125 | 45  | 50  | ▲ <b>369.189.16.1</b> |                        |                        |
| 160        | 210        | 140 | 140 | 350 | 105 | 35  | 30  | ▲ <b>369.195.16.1</b> |                        |                        |

## Branch fittings

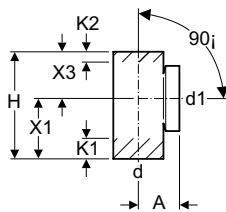
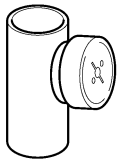


### Branch fittings 91½° (88½°)

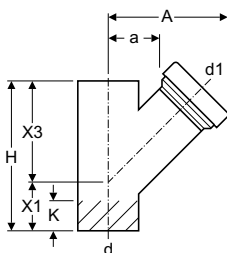
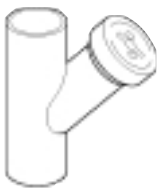
| d          | d1  | X1  | X2  | X3  | H   | K1  | K2  | K3             | Art. No.        |
|------------|-----|-----|-----|-----|-----|-----|-----|----------------|-----------------|
| <b>200</b> | 90  | 180 | 180 | 180 | 360 | 70  | 60  | 70             | ○ 370.180.16.1  |
|            | 110 | 180 | 180 | 180 | 360 | 70  | 60  | 70             | ○ 370.185.16.1  |
|            | 125 | 180 | 180 | 180 | 360 | 65  | 60  | 65             | ○ 370.189.16.1  |
|            | 160 | 180 | 180 | 180 | 360 | 45  | 50  | 45             | ○ 370.195.16.1  |
|            | 200 | 180 | 180 | 180 | 360 | 25  | 30  | 25             | ○ 370.196.16.1  |
| <b>250</b> | 110 | 220 | 220 | 220 | 440 | 110 | 75  | 110            | ▲ 371.185.16.1  |
|            | 125 | 220 | 220 | 220 | 440 | 105 | 75  | 105            | ▲ 371.189.16.1  |
|            | 160 | 220 | 220 | 220 | 440 | 85  | 65  | 85             | ○● 371.195.16.1 |
|            | 200 | 240 | 240 | 240 | 480 | 65  | 40  | 65             | ○ 371.196.16.1  |
|            | 250 | 240 | 240 | 240 | 480 | 40  | 40  | 40             | ○ 371.197.16.1  |
| <b>315</b> | 110 | 280 | 280 | 280 | 560 | 170 | 100 | 170            | ▲ 372.185.16.1  |
|            | 125 | 280 | 280 | 280 | 560 | 165 | 100 | 165            | ▲ 372.189.16.1  |
|            | 160 | 280 | 280 | 280 | 560 | 145 | 90  | 145            | ▲ 372.195.16.1  |
|            | 200 | 280 | 280 | 280 | 560 | 120 | 65  | 120            | ○● 372.196.16.1 |
|            | 250 | 280 | 280 | 280 | 560 | 95  | 65  | 95             | ○● 372.197.16.1 |
| 315        | 280 | 280 | 280 | 560 | 70  | 65  | 70  | ○ 372.198.16.1 |                 |

## Access pipes

### Access pipes with screwed access cover 90°

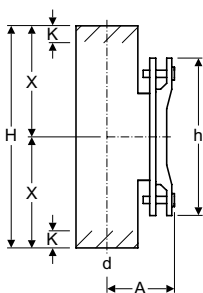
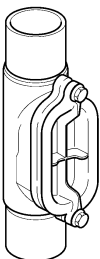


| d          | d1  | A   | X1  | X3  | H   | K1  | K2 | Art. No.        |
|------------|-----|-----|-----|-----|-----|-----|----|-----------------|
| <b>63</b>  | 63  | 90  | 105 | 70  | 175 | 45  | 10 | ○● 364.451.16.1 |
| <b>75</b>  | 75  | 95  | 105 | 70  | 175 | 35  | -  | ○● 365.451.16.1 |
| <b>90</b>  | 90  | 110 | 120 | 80  | 200 | 30  | -  | ○● 366.451.16.1 |
| <b>110</b> | 110 | 90  | 135 | 105 | 240 | 45  | -  | ○● 367.451.16.1 |
| <b>125</b> | 110 | 130 | 150 | 100 | 250 | 60  | 10 | ○● 368.451.16.1 |
| <b>160</b> | 110 | 150 | 210 | 140 | 350 | 120 | 40 | ▲ 369.451.16.1  |



### Access pipes 135° (45°) with screwed access cover

| d          | d1  | A   | a  | X1  | X3  | H   | K   | Art. No.        |
|------------|-----|-----|----|-----|-----|-----|-----|-----------------|
| <b>110</b> | 110 | 195 | 65 | 90  | 180 | 270 | 55  | ○● 367.453.16.1 |
| <b>125</b> | 110 | 200 | 70 | 100 | 200 | 300 | 70  | ○● 368.453.16.1 |
| <b>160</b> | 110 | 220 | 90 | 125 | 250 | 375 | 110 | ○● 369.453.16.1 |



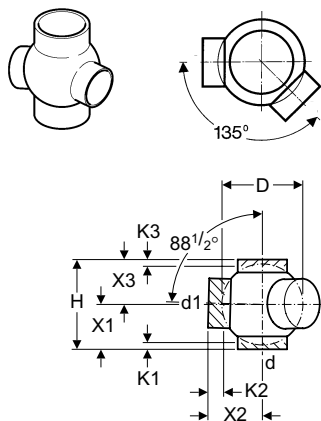
### Access pipes with oval access cover

| d          | A   | X   | H   | h   | K  | Art. No.       |
|------------|-----|-----|-----|-----|----|----------------|
| <b>110</b> | 120 | 200 | 400 | 280 | 30 | ▲ 367.454.16.1 |
| <b>125</b> | 125 | 205 | 410 | 280 | 40 | ▲ 368.454.16.1 |
| <b>160</b> | 140 | 215 | 430 | 280 | 40 | ▲ 369.454.16.1 |
| <b>200</b> | 175 | 325 | 650 | 380 | 55 | ○ 370.454.16.1 |
| <b>250</b> | 200 | 290 | 580 | 380 | 30 | ○ 371.454.16.1 |
| <b>315</b> | 230 | 310 | 620 | 380 | 80 | ▲ 372.454.16.1 |

- Buttweld      ▲ Either  
 ● Electroweld      ○● Requires a combination of both (see page 40)

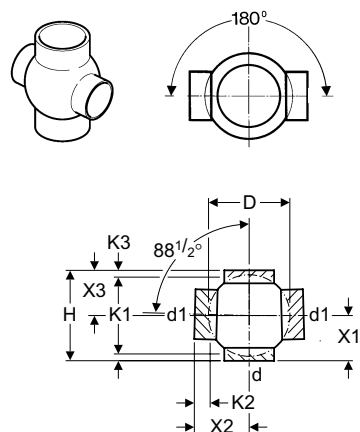
All dimensions in millimetres unless otherwise stated.

## Ball fittings



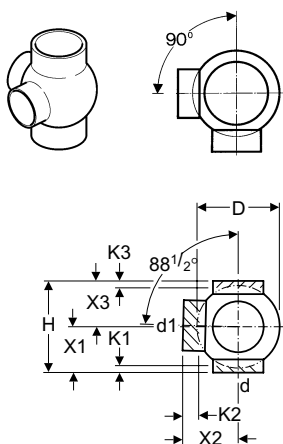
### Double branchball fittings 91½°/135°

| d          | d1  | D   | X1  | X2  | X3  | H   | K1 | K2 | K3 | Art. No.               |
|------------|-----|-----|-----|-----|-----|-----|----|----|----|------------------------|
| <b>63</b>  | 63  | 100 | 80  | 100 | 80  | 160 | 15 | 45 | 15 | ○● <b>364.370.16.1</b> |
| <b>75</b>  | 75  | 120 | 80  | 100 | 80  | 160 | 15 | 35 | 15 | ○● <b>365.375.16.1</b> |
| <b>90</b>  | 90  | 140 | 90  | 110 | 90  | 180 | 20 | 40 | 20 | ○● <b>366.380.16.1</b> |
| <b>110</b> | 50  | 120 | 100 | 120 | 100 | 200 | 15 | 15 | 15 | ○ <b>367.362.16.1</b>  |
|            | 56  | 170 | 100 | 120 | 100 | 200 | 15 | 15 | 15 | ○ <b>367.365.16.1</b>  |
|            | 63  | 170 | 100 | 120 | 100 | 200 | 15 | 15 | 15 | ○ <b>367.370.16.1</b>  |
|            | 75  | 170 | 100 | 120 | 100 | 200 | 15 | 15 | 15 | ○ <b>367.375.16.1</b>  |
|            | 90  | 170 | 100 | 120 | 100 | 200 | 15 | 15 | 15 | ○ <b>367.380.16.1</b>  |
|            | 110 | 170 | 100 | 120 | 100 | 200 | 15 | 40 | 15 | ○● <b>367.385.16.1</b> |
| <b>125</b> | 110 | 180 | 100 | 125 | 100 | 200 | 15 | 40 | 15 | ○● <b>368.385.16.1</b> |
| <b>160</b> | 110 | 230 | 125 | 160 | 125 | 250 | 20 | 15 | 20 | ○ <b>369.385.16.1</b>  |



### Double branchball fittings 91½°/180°

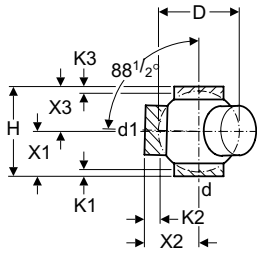
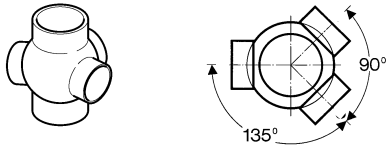
| d          | d1  | D   | X1  | X2  | X3  | H   | K1 | K2 | K3 | Art. No.               |
|------------|-----|-----|-----|-----|-----|-----|----|----|----|------------------------|
| <b>63</b>  | 63  | 100 | 80  | 100 | 80  | 160 | 15 | 45 | 15 | ○● <b>364.270.16.1</b> |
| <b>75</b>  | 75  | 120 | 80  | 100 | 80  | 160 | 15 | 35 | 15 | ○● <b>365.275.16.1</b> |
| <b>90</b>  | 90  | 140 | 90  | 110 | 90  | 180 | 20 | 40 | 20 | ○● <b>366.280.16.1</b> |
| <b>110</b> | 50  | 170 | 100 | 120 | 100 | 200 | 15 | 15 | 15 | ○ <b>367.262.16.1</b>  |
|            | 56  | 170 | 100 | 120 | 100 | 200 | 15 | 15 | 15 | ○ <b>367.265.16.1</b>  |
|            | 63  | 170 | 100 | 120 | 100 | 200 | 15 | 15 | 15 | ○ <b>367.270.16.1</b>  |
|            | 75  | 170 | 100 | 120 | 100 | 200 | 15 | 15 | 15 | ○ <b>367.275.16.1</b>  |
|            | 90  | 170 | 100 | 120 | 100 | 200 | 15 | 15 | 15 | ○ <b>367.280.16.1</b>  |
|            | 110 | 170 | 100 | 120 | 100 | 200 | 15 | 40 | 15 | ○● <b>367.285.16.1</b> |
| <b>125</b> | 110 | 180 | 100 | 125 | 100 | 200 | 15 | 40 | 15 | ○● <b>368.285.16.1</b> |
| <b>160</b> | 110 | 230 | 125 | 160 | 125 | 250 | 20 | 15 | 20 | ○ <b>369.285.16.1</b>  |



### Double branchball fittings 91½°/90°

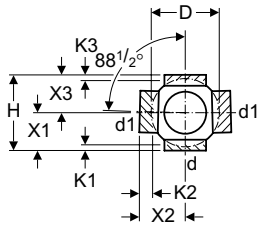
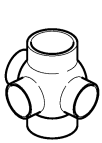
| d          | d1  | D   | X1  | X2  | X3  | H   | K1 | K2 | K3 | Art. No.               |
|------------|-----|-----|-----|-----|-----|-----|----|----|----|------------------------|
| <b>63</b>  | 63  | 100 | 80  | 100 | 80  | 160 | 15 | 45 | 15 | ○● <b>364.320.16.1</b> |
| <b>75</b>  | 75  | 120 | 80  | 100 | 80  | 160 | 15 | 35 | 15 | ○● <b>365.325.16.1</b> |
| <b>90</b>  | 90  | 140 | 90  | 110 | 90  | 180 | 20 | 40 | 20 | ○● <b>366.330.16.1</b> |
| <b>110</b> | 56  | 170 | 100 | 120 | 100 | 200 | 15 | 15 | 15 | ○ <b>367.315.16.1</b>  |
|            | 63  | 170 | 100 | 120 | 100 | 200 | 15 | 15 | 15 | ○ <b>367.320.16.1</b>  |
|            | 75  | 170 | 100 | 120 | 100 | 200 | 15 | 15 | 15 | ○ <b>367.325.16.1</b>  |
|            | 90  | 170 | 100 | 120 | 100 | 200 | 15 | 15 | 15 | ○ <b>367.330.16.1</b>  |
|            | 110 | 170 | 100 | 120 | 100 | 200 | 15 | 40 | 15 | ○● <b>367.335.16.1</b> |
| <b>125</b> | 110 | 180 | 100 | 125 | 100 | 200 | 15 | 40 | 15 | ○● <b>368.335.16.1</b> |
| <b>160</b> | 110 | 230 | 125 | 160 | 125 | 250 | 20 | 15 | 20 | ○ <b>369.335.16.1</b>  |

## Ball fittings



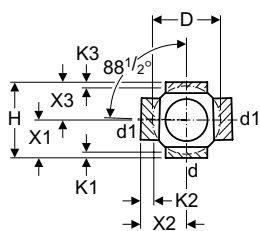
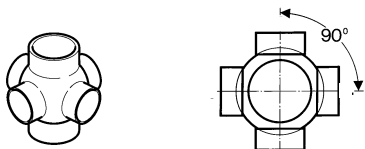
### Multi-branch fittings 91½°/135°

| d (mm)     | d1  | D   | X1  | X2  | X3  | H   | K1 | K2 | K3 | Art. No.               |
|------------|-----|-----|-----|-----|-----|-----|----|----|----|------------------------|
| <b>63</b>  | 63  | 100 | 80  | 100 | 80  | 160 | 15 | 45 | 15 | ○● <b>364.600.16.1</b> |
| <b>75</b>  | 75  | 120 | 80  | 100 | 80  | 160 | 15 | 35 | 15 | ○● <b>365.600.16.1</b> |
| <b>110</b> | 110 | 170 | 100 | 120 | 100 | 200 | 15 | 40 | 15 | ○● <b>367.600.16.1</b> |
| <b>125</b> | 110 | 180 | 100 | 125 | 100 | 200 | 15 | 40 | 15 | ○● <b>368.600.16.1</b> |



### Multi-branch fittings 91½°/90°

| d          | d1  | D   | X1  | X2  | X3  | H   | K1 | K2 | K3 | Art. No.               |
|------------|-----|-----|-----|-----|-----|-----|----|----|----|------------------------|
| <b>63</b>  | 63  | 100 | 80  | 100 | 80  | 160 | 15 | 45 | 15 | ○● <b>364.605.16.1</b> |
| <b>75</b>  | 75  | 120 | 80  | 100 | 80  | 160 | 15 | 35 | 15 | ○● <b>365.605.16.1</b> |
| <b>90</b>  | 90  | 140 | 90  | 110 | 90  | 180 | 20 | 40 | 20 | ○● <b>366.605.16.1</b> |
| <b>110</b> | 110 | 170 | 100 | 120 | 100 | 200 | 15 | 40 | 15 | ○● <b>367.605.16.1</b> |
| <b>125</b> | 110 | 180 | 100 | 125 | 100 | 200 | 15 | 40 | 15 | ○● <b>368.605.16.1</b> |
| <b>160</b> | 110 | 230 | 125 | 160 | 125 | 250 | 20 | 15 | 20 | ○ <b>369.605.16.1</b>  |



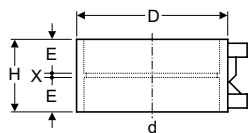
### Multi-branch fittings 91½°/90°

| d          | d1  | D   | X1  | X2  | X3  | H   | K1 | K2 | K3 | Art. No.               |
|------------|-----|-----|-----|-----|-----|-----|----|----|----|------------------------|
| <b>63</b>  | 63  | 100 | 80  | 100 | 80  | 160 | 15 | 45 | 15 | ○● <b>364.610.16.1</b> |
| <b>75</b>  | 75  | 120 | 80  | 100 | 80  | 160 | 15 | 35 | 15 | ○● <b>365.610.16.1</b> |
| <b>110</b> | 110 | 170 | 100 | 120 | 100 | 200 | 15 | 40 | 15 | ○● <b>367.610.16.1</b> |
| <b>125</b> | 110 | 180 | 100 | 125 | 100 | 200 | 15 | 40 | 15 | ○● <b>368.610.16.1</b> |

- Butt weld
- Electroweld
- ▲ Either
- Requires a combination of both (see page 40)

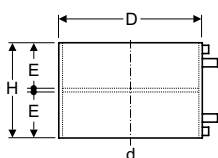
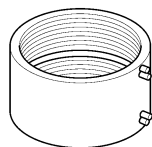
All dimensions in millimetres unless otherwise stated.

## Electroweld sleeve couplings



### Electroweld sleeve couplings

| d   | D   | E  | X | H  |   | Art. No.     |
|-----|-----|----|---|----|---|--------------|
| 40  | 52  | 28 | 3 | 60 | ● | 360.771.16.1 |
| 50  | 62  | 28 | 3 | 60 | ● | 361.771.16.1 |
| 56  | 68  | 28 | 3 | 60 | ● | 363.771.16.1 |
| 63  | 76  | 28 | 3 | 60 | ● | 364.771.16.1 |
| 75  | 89  | 28 | 3 | 60 | ● | 365.771.16.1 |
| 90  | 104 | 28 | 3 | 60 | ● | 366.771.16.1 |
| 110 | 125 | 28 | 3 | 60 | ● | 367.771.16.1 |
| 125 | 142 | 28 | 3 | 60 | ● | 368.771.16.1 |
| 160 | 178 | 28 | 3 | 60 | ● | 369.771.16.1 |



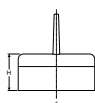
### Electroweld sleeve couplings

| d   | D   | E  | H   |   | Art. No.     |
|-----|-----|----|-----|---|--------------|
| 200 | 224 | 75 | 150 | ● | 370.775.16.1 |
| 250 | 275 | 75 | 150 | ● | 371.775.16.1 |
| 315 | 343 | 75 | 150 | ● | 372.775.16.1 |



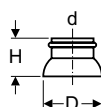
### PE weld on caps

| d   |   | Art. No.     |
|-----|---|--------------|
| 32  | ○ | 379.812.16.1 |
| 40  | ○ | 360.812.16.1 |
| 50  | ○ | 361.812.16.1 |
| 56  | ○ | 363.812.16.1 |
| 63  | ○ | 364.812.16.1 |
| 75  | ○ | 365.812.16.1 |
| 90  | ○ | 366.812.16.1 |
| 110 | ○ | 367.812.16.1 |
| 125 | ○ | 368.812.16.1 |
| 160 | ○ | 369.812.16.1 |
| 200 | ○ | 370.812.16.0 |



### Extended PE weld on caps

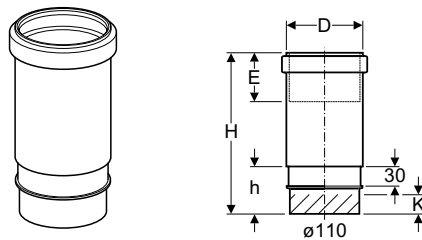
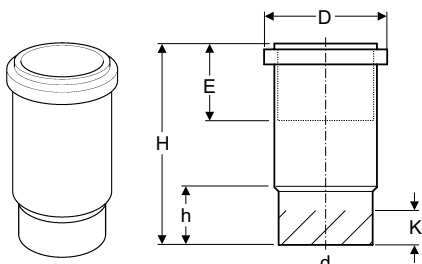
| d   | H  |   | Art. No.     |
|-----|----|---|--------------|
| 50  | 45 | ▲ | 361.929.16.1 |
| 56  | 45 | ▲ | 363.929.16.1 |
| 63  | 45 | ▲ | 364.929.16.1 |
| 75  | 45 | ▲ | 365.929.16.1 |
| 90  | 45 | ▲ | 366.929.16.1 |
| 110 | 45 | ▲ | 367.929.16.1 |
| 160 | 45 | ▲ | 369.929.16.1 |



### Protecting caps for weathering slates

| d   | D   | H   | Art. No.     |
|-----|-----|-----|--------------|
| 63  | 100 | 70  | 364.989.16.1 |
| 75  | 120 | 90  | 365.989.16.1 |
| 90  | 140 | 100 | 366.989.16.1 |
| 110 | 170 | 110 | 367.989.16.1 |
| 125 | 180 | 120 | 368.989.16.1 |
| 160 | 230 | 160 | 369.989.16.1 |

## Expansion sockets Ring-seal sockets

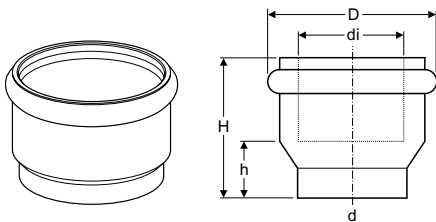


110 version

### Expansion sockets with ring-seal for horizontal or vertical installation

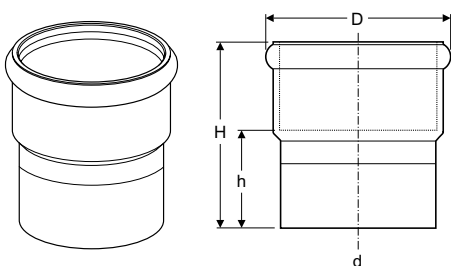
| d   | D   | E   | H   | h   | K  |   | Art. No.     |
|-----|-----|-----|-----|-----|----|---|--------------|
| 32  | 50  | 105 | 85  | 10  | -  | ○ | 379.791.16.1 |
| 40  | 66  | 105 | 230 | 65  | 40 | ▲ | 360.700.16.1 |
| 50  | 80  | 105 | 233 | 65  | 40 | ▲ | 361.700.16.1 |
| 56  | 86  | 105 | 233 | 65  | 40 | ▲ | 363.700.16.1 |
| 63  | 93  | 105 | 233 | 65  | 40 | ▲ | 364.700.16.1 |
| 75  | 105 | 105 | 233 | 65  | 40 | ▲ | 365.700.16.1 |
| 90  | 123 | 105 | 234 | 65  | 40 | ▲ | 366.700.16.1 |
| 110 | 135 | 105 | 255 | 77  | 20 | ○ | 367.700.16.1 |
| 125 | 162 | 105 | 239 | 65  | 40 | ▲ | 368.700.16.1 |
| 160 | 202 | 105 | 240 | 70  | 40 | ▲ | 369.700.16.1 |
| 200 | 247 | 205 | 400 | 125 | 60 | ○ | 370.700.16.1 |
| 250 | 293 | 205 | 425 | 168 | 60 | ○ | 371.700.16.1 |
| 315 | 362 | 205 | 458 | 170 | 60 | ○ | 372.700.16.1 |

### Ring-seal sockets



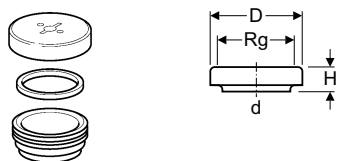
| d/di | D   | H   | h  |   | Art. No.     |
|------|-----|-----|----|---|--------------|
| 32   | 46  | 25  | 5  | ○ | 379.768.16.1 |
| 40   | 57  | 63  | 20 | ○ | 360.779.16.1 |
| 50   | 67  | 63  | 20 | ○ | 361.779.16.1 |
| 56   | 72  | 63  | 20 | ○ | 363.779.16.1 |
| 63   | 80  | 63  | 20 | ○ | 364.779.16.1 |
| 75   | 92  | 88  | 20 | ○ | 365.779.16.1 |
| 90   | 108 | 88  | 25 | ○ | 366.779.16.1 |
| 110  | 131 | 88  | 25 | ○ | 367.779.16.1 |
| 125  | 149 | 88  | 25 | ○ | 368.779.16.1 |
| 160  | 188 | 123 | 30 | ○ | 369.779.16.1 |

### Extended ring-seal sockets



| d/D | h  | H   |   | Art. No.     |
|-----|----|-----|---|--------------|
| 50  | 50 | 93  | ▲ | 361.930.16.1 |
| 56  | 50 | 93  | ▲ | 363.930.16.1 |
| 63  | 50 | 93  | ▲ | 364.930.16.1 |
| 75  | 55 | 118 | ▲ | 365.930.16.1 |
| 90  | 55 | 118 | ▲ | 366.930.16.1 |
| 110 | 55 | 118 | ▲ | 367.930.16.1 |
| 160 | 60 | 153 | ▲ | 369.930.16.1 |

### Complete stop end

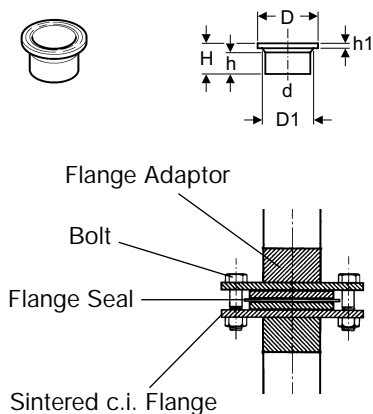


| d   | Rg    | D   | H  |   | Art. No.     |
|-----|-------|-----|----|---|--------------|
| 110 | 130x¼ | 143 | 40 | ○ | 367.471.16.1 |

- Buttweld
- Electroweld
- ▲ Either
- Requires a combination of both (see page 40)

All dimensions in millimetres unless otherwise stated.

## Flanges



### Flange adaptors

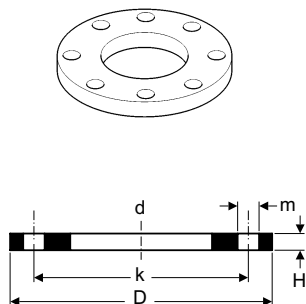
| d          | D   | D1  | H   | h  | h1 |   | Art. No.            |
|------------|-----|-----|-----|----|----|---|---------------------|
| <b>50</b>  | 80  | 54  | 60  | 42 | 8  | ○ | <b>361.744.16.1</b> |
| <b>56</b>  | 90  | 68  | 60  | 36 | 8  | ○ | <b>363.744.16.1</b> |
| <b>63</b>  | 90  | 68  | 60  | 37 | 8  | ○ | <b>364.744.16.1</b> |
| <b>75</b>  | 110 | 78  | 65  | 40 | 9  | ○ | <b>365.744.16.1</b> |
| <b>90</b>  | 128 | 96  | 70  | 44 | 11 | ○ | <b>366.744.16.1</b> |
| <b>110</b> | 148 | 116 | 75  | 48 | 12 | ○ | <b>367.744.16.1</b> |
| <b>125</b> | 160 | 131 | 80  | 50 | 14 | ○ | <b>368.744.16.1</b> |
| <b>160</b> | 198 | 165 | 90  | 51 | 17 | ○ | <b>369.744.16.1</b> |
| <b>200</b> | 260 | 206 | 80  | 56 | 14 | ○ | <b>370.744.16.1</b> |
| <b>250</b> | 325 | 256 | 80  | 54 | 16 | ○ | <b>371.744.16.1</b> |
| <b>315</b> | 370 | 315 | 100 | 70 | 20 | ○ | <b>372.744.16.1</b> |



### Flange seals

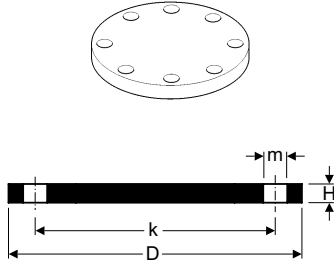
| d          | d1  | D   | H |  | Art. No.            |
|------------|-----|-----|---|--|---------------------|
| <b>50</b>  | 45  | 92  | 3 |  | <b>361.742.00.1</b> |
| <b>56</b>  | 59  | 107 | 3 |  | <b>363.742.00.1</b> |
| <b>63</b>  | 69  | 127 | 3 |  | <b>365.742.00.1</b> |
| <b>90</b>  | 83  | 142 | 3 |  | <b>366.742.00.1</b> |
| <b>110</b> | 102 | 162 | 3 |  | <b>367.742.00.1</b> |
| <b>125</b> | 115 | 192 | 3 |  | <b>368.742.00.1</b> |
| <b>160</b> | 149 | 217 | 3 |  | <b>369.742.00.1</b> |
| <b>200</b> | 191 | 272 | 3 |  | <b>370.742.00.1</b> |
| <b>250</b> | 238 | 327 | 4 |  | <b>371.742.00.1</b> |
| <b>315</b> | 298 | 377 | 4 |  | <b>372.742.00.1</b> |

### Sintered c. i. flanges



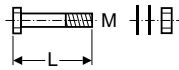
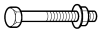
| d          | D   | H  | k   | m  |  | Art. No.            |
|------------|-----|----|-----|----|--|---------------------|
| <b>50</b>  | 150 | 12 | 110 | 18 |  | <b>361.745.00.1</b> |
| <b>56</b>  | 165 | 12 | 125 | 18 |  | <b>363.745.00.1</b> |
| <b>63</b>  | 185 | 12 | 145 | 18 |  | <b>365.745.00.1</b> |
| <b>90</b>  | 200 | 14 | 160 | 18 |  | <b>366.745.00.1</b> |
| <b>110</b> | 220 | 14 | 180 | 18 |  | <b>367.745.00.1</b> |
| <b>125</b> | 250 | 14 | 210 | 18 |  | <b>368.745.00.1</b> |
| <b>160</b> | 285 | 14 | 240 | 23 |  | <b>369.745.00.1</b> |
| <b>200</b> | 340 | 14 | 295 | 23 |  | <b>370.745.00.1</b> |
| <b>250</b> | 395 | 16 | 350 | 23 |  | <b>371.745.00.1</b> |
| <b>315</b> | 445 | 20 | 400 | 23 |  | <b>372.745.00.1</b> |

# Flanges



## Sintered c. i. blind flanges

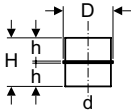
| d          | D   | H  | k   | m  | Art. No.            |
|------------|-----|----|-----|----|---------------------|
| <b>50</b>  | 150 | 12 | 110 | 18 | <b>361.748.00.1</b> |
| <b>56</b>  | 165 | 12 | 125 | 18 | <b>363.748.00.1</b> |
| <b>63</b>  |     |    |     |    |                     |
| <b>75</b>  | 185 | 12 | 145 | 18 | <b>365.748.00.1</b> |
| <b>90</b>  | 200 | 14 | 160 | 18 | <b>366.748.00.1</b> |
| <b>110</b> | 220 | 14 | 180 | 18 | <b>367.748.00.1</b> |
| <b>125</b> | 250 | 14 | 210 | 18 | <b>368.748.00.1</b> |
| <b>160</b> | 285 | 14 | 240 | 23 | <b>369.748.00.1</b> |
| <b>200</b> | 340 | 14 | 295 | 23 | <b>370.748.00.1</b> |
| <b>250</b> | 395 | 16 | 350 | 23 | <b>371.748.00.1</b> |
| <b>315</b> | 445 | 20 | 400 | 23 | <b>372.748.00.1</b> |



## Bolts (1 screw, 1 nut, 2 washers)

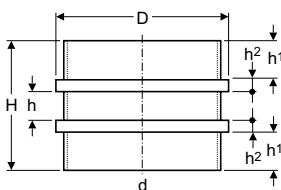
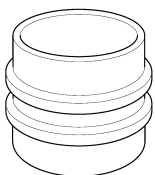
| d          | M   | L   | QTY | Art. No.            |
|------------|-----|-----|-----|---------------------|
| <b>50</b>  | M16 | 70  | x4  | <b>361.743.26.1</b> |
| <b>56</b>  |     |     |     |                     |
| <b>63</b>  |     |     |     |                     |
| <b>75</b>  | M16 | 80  | x8  | <b>366.743.00.1</b> |
| <b>90</b>  |     |     |     |                     |
| <b>110</b> |     |     |     |                     |
| <b>125</b> | M20 | 90  | x8  | <b>369.743.26.1</b> |
| <b>160</b> |     |     |     |                     |
| <b>200</b> |     |     |     |                     |
| <b>250</b> | M20 | 100 | x12 | <b>371.743.26.1</b> |
| <b>315</b> | M20 | 110 | x12 | <b>372.743.26.1</b> |

## Flange bushings (Anchor pipe)



### Flange bushings (Anchor pipe)

| d          | D   | H   | h  | Art. No. |                     |
|------------|-----|-----|----|----------|---------------------|
| <b>32</b>  | 38  | 52  | 24 | ○        | <b>379.772.16.1</b> |
| <b>40</b>  | 47  | 68  | 32 | ○        | <b>360.772.16.1</b> |
| <b>50</b>  | 57  | 68  | 32 | ○        | <b>361.772.16.1</b> |
| <b>56</b>  | 65  | 58  | 27 | ○        | <b>363.772.16.1</b> |
| <b>63</b>  | 70  | 72  | 34 | ○        | <b>364.772.16.1</b> |
| <b>75</b>  | 90  | 72  | 34 | ○        | <b>365.772.16.1</b> |
| <b>90</b>  | 100 | 92  | 44 | ○        | <b>366.772.16.1</b> |
| <b>110</b> | 120 | 117 | 56 | ○        | <b>367.772.16.1</b> |
| <b>125</b> | 133 | 80  | 31 | ○        | <b>368.751.16.1</b> |
| <b>160</b> | 170 | 175 | 82 | ○        | <b>369.772.16.1</b> |



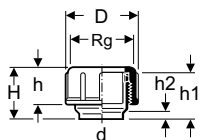
### Double-flange bushings (Anchor pipe)

| d          | D   | H   | h  | Art. No. |                     |
|------------|-----|-----|----|----------|---------------------|
| <b>125</b> | 133 | 80  | 31 | ○        | <b>368.751.16.1</b> |
| <b>200</b> | 216 | 141 | 41 | ○        | <b>370.751.16.1</b> |
| <b>250</b> | 262 | 201 | 41 | ○        | <b>371.751.16.1</b> |
| <b>315</b> | 326 | 201 | 41 | ○        | <b>372.751.16.1</b> |

- Buttweld
- Electroweld
- ▲ Either
- Requires a combination of both (see page 40)

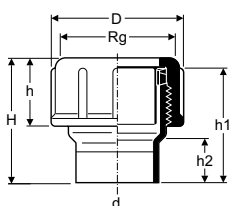
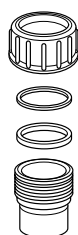
All dimensions in millimetres unless otherwise stated.

## Screw-threaded joints



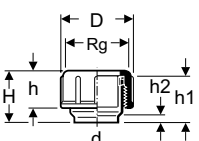
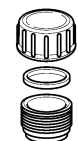
### Complete joints

| d   | Rg       | D   | H  | h  | h1 | h2 | Art. No.       |
|-----|----------|-----|----|----|----|----|----------------|
| 32  | 44x1/8"  | 56  | 45 | 26 | 30 | 10 | ○ 379.740.16.1 |
| 40  | 52x1/8"  | 64  | 63 | 33 | 50 | 20 | ○ 360.740.16.1 |
| 50  | 62x1/8"  | 74  | 63 | 33 | 50 | 20 | ○ 361.740.16.1 |
| 56  | 70x1/8"  | 85  | 68 | 35 | 50 | 20 | ○ 363.740.16.1 |
| 63  | 75x1/8"  | 90  | 68 | 42 | 50 | 20 | ○ 364.740.16.1 |
| 75  | 95x1/8"  | 112 | 96 | 45 | 75 | 25 | ○ 365.740.16.1 |
| 90  | 110x1/4" | 129 | 97 | 50 | 75 | 25 | ○ 366.740.16.1 |
| 110 | 130x1/4" | 149 | 97 | 65 | 75 | 25 | ○ 367.740.16.1 |



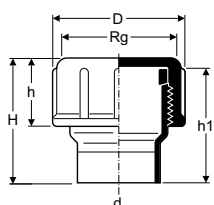
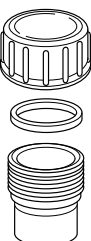
### Extended complete joints

| d  | Rg      | D   | H   | h  | h1  | h2 | Art. No.       |
|----|---------|-----|-----|----|-----|----|----------------|
| 56 | 70x1/8" | 85  | 98  | 35 | 80  | 50 | ▲ 363.931.16.1 |
| 75 | 95x1/8" | 112 | 126 | 45 | 105 | 68 | ▲ 365.931.16.1 |



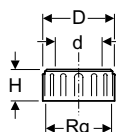
### Complete stop ends

| d   | Rg       | D   | H  | h  | h1 | h2 | Art. No.       |
|-----|----------|-----|----|----|----|----|----------------|
| 32  | 44x1/8"  | 56  | 45 | 26 | 30 | 10 | ○ 379.750.16.1 |
| 40  | 52x1/8"  | 64  | 63 | 33 | 50 | 20 | ○ 360.750.16.1 |
| 50  | 62x1/8"  | 74  | 63 | 33 | 50 | 20 | ○ 361.750.16.1 |
| 56  | 70x1/8"  | 85  | 68 | 35 | 50 | 20 | ○ 363.750.16.1 |
| 63  | 75x1/8"  | 90  | 68 | 42 | 50 | 20 | ○ 364.750.16.1 |
| 75  | 95x1/8"  | 112 | 96 | 45 | 75 | 25 | ○ 365.750.16.1 |
| 90  | 110x1/4" | 129 | 97 | 50 | 75 | 25 | ○ 366.750.16.1 |
| 110 | 130x1/4" | 149 | 97 | 65 | 75 | 25 | ○ 367.750.16.1 |



### Extended complete stop ends

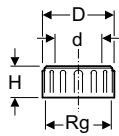
| d   | Rg       | D   | H   | h  | h1  | h2 | Art. No.       |
|-----|----------|-----|-----|----|-----|----|----------------|
| 56  | 70x1/8"  | 85  | 98  | 35 | 80  | 50 | ▲ 363.932.16.1 |
| 75  | 95x1/8"  | 112 | 126 | 45 | 105 | 68 | ▲ 365.932.16.1 |
| 90  | 110x1/4" | 129 | 127 | 50 | 105 | 68 | ▲ 366.932.16.1 |
| 110 | 130x1/4" | 149 | 127 | 65 | 105 | 68 | ▲ 367.932.16.1 |



### Covers with seal

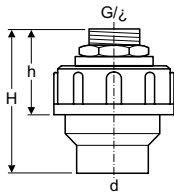
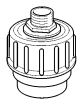
| d   | Rg       | D   | H  | Art. No.     |
|-----|----------|-----|----|--------------|
| 32  | 44x1/8"  | 56  | 33 | 379.781.16.1 |
| 40  | 52x1/8"  | 64  | 33 | 360.781.16.1 |
| 50  | 62x1/8"  | 74  | 33 | 361.781.16.1 |
| 56  | 70x1/8"  | 85  | 35 | 363.781.16.1 |
| 63  | 75x1/8"  | 90  | 42 | 364.781.16.1 |
| 75  | 95x1/8"  | 112 | 45 | 365.781.16.1 |
| 90  | 110x1/4" | 129 | 50 | 366.781.16.1 |
| 110 | 130x1/4" | 149 | 65 | 367.781.16.1 |

## Screw-threaded joints



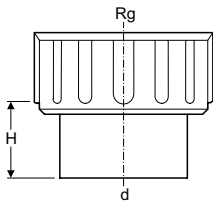
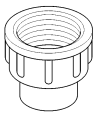
### Nuts with washer and seal

| d  | Rg      | D  | H  | Art. No.     |
|----|---------|----|----|--------------|
| 56 | 70x1/8" | 85 | 68 | 363.749.16.1 |
| 63 | 75x1/8" | 90 | 68 | 364.749.16.1 |



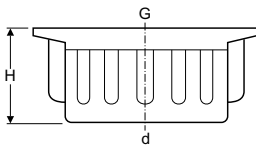
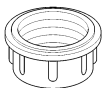
### Screw-threaded covers with seal and brass nipple

| d  | ø  | G    | H  | h  | Art. No.       |
|----|----|------|----|----|----------------|
| 40 | 15 | 1/2" | 90 | 60 | ○ 152.973.00.1 |
| 50 | 15 | 1/2" | 90 | 60 | ○ 152.979.00.1 |
| 50 | 22 | 1"   | 90 | 60 | ○ 152.978.00.1 |



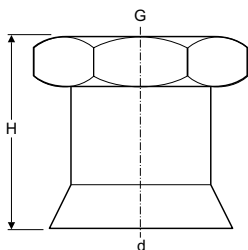
### Threaded pipe ends (to be welded on)

| d  | Rg        | H  | Art. No.       |
|----|-----------|----|----------------|
| 40 | 60 x 1/8" | 30 | ○ 152.174.16.1 |
| 50 | 60 x 1/8" | 40 | ○ 152.178.16.1 |



### Threaded pipe ends with female thread and seal

| d  | G      | H  | Art. No.       |
|----|--------|----|----------------|
| 50 | 1 1/4" | 40 | ○ 352.395.16.1 |
| 50 | 1 1/2" | 40 | ○ 352.396.16.1 |
| 50 | 2"     | 45 | ○ 352.397.16.1 |



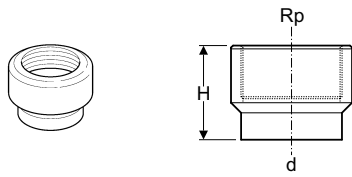
### Loose nut adaptors

| d  | G      | H  | Art. No.       |
|----|--------|----|----------------|
| 32 | 1 1/4" | 20 | ○ 152.184.16.1 |
| 40 | 1 1/4" | 45 | ○ 152.175.16.1 |
| 40 | 1 1/2" | 35 | ○ 152.176.16.1 |
| 40 | 2"     | 30 | ○ 152.177.16.1 |
| 50 | 1 1/4" | 30 | ○ 152.179.16.1 |
| 50 | 1 1/2" | 30 | ○ 152.180.16.1 |
| 50 | 2"     | 30 | ○ 152.181.16.1 |

- Buttweld      ▲ Either  
 ● Electroweld      ○● Requires a combination of both (see page 40)

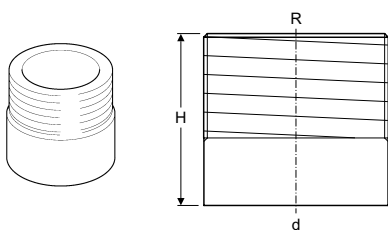
All dimensions in millimetres unless otherwise stated.

## Adaptors for different pipe materials



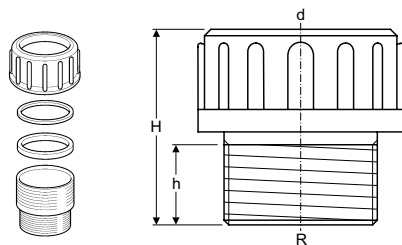
### Adaptors in PE with female thread, reinforced with steel ring

| d  | Rp     | H  |   | Art. No.     |
|----|--------|----|---|--------------|
| 40 | 1/2"   | 55 | ○ | 360.719.16.1 |
| 40 | 3/4"   | 55 | ○ | 360.720.16.1 |
| 40 | 1"     | 55 | ○ | 360.721.16.1 |
| 50 | 1/2"   | 60 | ○ | 361.719.16.1 |
| 50 | 3/4"   | 60 | ○ | 361.720.16.1 |
| 50 | 1"     | 60 | ○ | 361.721.16.1 |
| 50 | 1 1/4" | 60 | ○ | 361.722.16.1 |
| 50 | 1 1/2" | 60 | ○ | 361.723.16.1 |
| 56 | 2"     | 65 | ○ | 363.724.16.1 |
| 63 | 2"     | 70 | ○ | 364.724.16.1 |
| 75 | 2 1/2" | 70 | ○ | 365.725.16.1 |



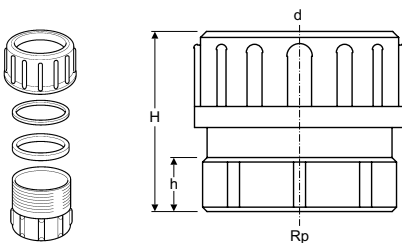
### Adaptors in PE with male thread, reinforced with steel ring (to be welded on)

| d  | Rp     | H  |   | Art. No.     |
|----|--------|----|---|--------------|
| 50 | 1 1/4" | 60 | ○ | 361.726.16.1 |
| 50 | 1 1/2" | 60 | ○ | 361.727.16.1 |
| 56 | 2"     | 65 | ○ | 363.728.16.1 |
| 63 | 2"     | 65 | ○ | 364.728.16.1 |
| 75 | 2 1/2" | 70 | ○ | 365.729.16.1 |



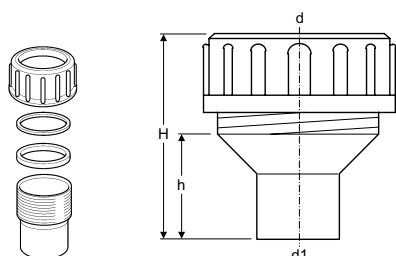
### Adaptors in brass with male thread and PE nut

| d  | Rp     | H  | h  | Art. No.     |
|----|--------|----|----|--------------|
| 50 | 1 1/2" | 65 | 27 | 359.309.00.1 |
| 56 | 2"     | 65 | 27 | 359.311.00.1 |



### Adaptors in brass with female thread and PE nut

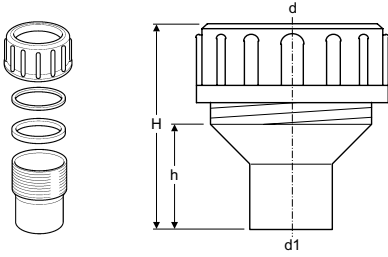
| d  | Rp | H  | h  | Art. No.     |
|----|----|----|----|--------------|
| 56 | 2" | 60 | 18 | 359.313.00.1 |
| 75 | 3" | 90 | 30 | 359.316.00.1 |



### Adaptor in brass for soldering and PE nut

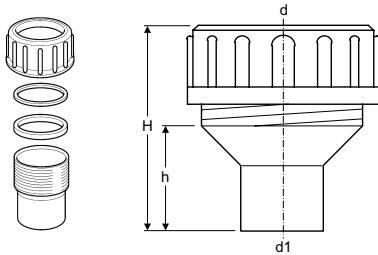
| Geberit Lead |    |    |    | Art. No.     |
|--------------|----|----|----|--------------|
| d            | d1 | H  | h  |              |
| 56           | 54 | 83 | 35 | 359.330.00.1 |

## Adaptors for different pipe materials



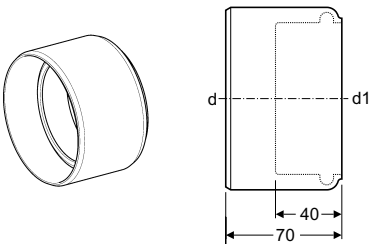
### Adaptor in lead for welding or soldering and PE nut

| d         | d1 | H  | h  | Art. No.            |
|-----------|----|----|----|---------------------|
| <b>56</b> | 60 | 83 | 45 | <b>359.341.00.1</b> |



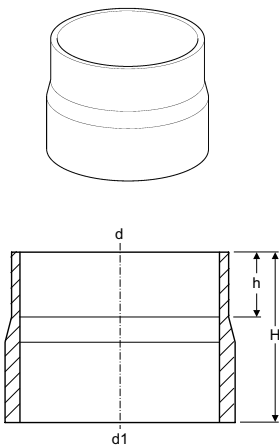
### Adaptors in PVC for solvent cement joint and PE nut

| d         | d1 | H  | h  | Art. No.            |
|-----------|----|----|----|---------------------|
| <b>56</b> | 50 | 80 | 40 | <b>359.421.00.1</b> |
| <b>56</b> | 63 | 78 | 40 | <b>359.423.00.1</b> |



### PVC ring-seal socket, adaptor to HDPE 90mm

| d          | d1 | Art. No.            |
|------------|----|---------------------|
| <b>110</b> | 90 | <b>152.465.00.1</b> |

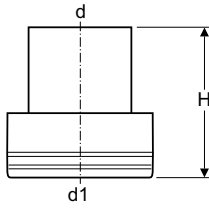
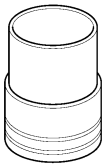


| d          | d1  | H   |   | Art. No.            |
|------------|-----|-----|---|---------------------|
| <b>50</b>  | 68  | 78  | ▲ | <b>359.260.16.1</b> |
| <b>56</b>  | 68  | 78  | ▲ | <b>359.262.16.1</b> |
| <b>63</b>  | 68  | 100 | ▲ | <b>359.263.16.1</b> |
| <b>75</b>  | 68  | 78  | ▲ | <b>359.264.16.1</b> |
| <b>75</b>  | 89  | 80  | ▲ | <b>359.265.16.1</b> |
| <b>90</b>  | 89  | 100 | ▲ | <b>359.266.16.1</b> |
| <b>110</b> | 109 | 100 | ▲ | <b>359.267.16.1</b> |
| <b>125</b> | 135 | 100 | ▲ | <b>359.268.16.1</b> |
| <b>160</b> | 161 | 100 | ▲ | <b>359.261.16.1</b> |
| <b>200</b> | 212 | 160 | ▲ | <b>370.738.16.1</b> |
| <b>250</b> | 274 | 160 | ▲ | <b>371.738.16.1</b> |
| <b>315</b> | 326 | 160 | ▲ | <b>372.738.16.1</b> |

- Butt weld      ▲ Either  
 ● Electroweld      ○● Requires a combination of both (see page 40)

All dimensions in millimetres unless otherwise stated.

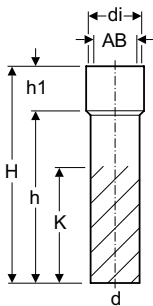
## Adaptors for different pipe materials



### Adaptors to clay / fibre cement

| d          | d1  | H   |   | Art. No.            |
|------------|-----|-----|---|---------------------|
| <b>110</b> | 132 | 155 | ○ | <b>367.739.16.1</b> |
| <b>125</b> | 154 | 155 | ○ | <b>368.739.16.1</b> |
| <b>160</b> | 186 | 155 | ○ | <b>369.739.16.1</b> |
| <b>200</b> | 242 | 200 | ○ | <b>370.739.16.1</b> |
| <b>250</b> | 298 | 200 | ○ | <b>371.739.16.1</b> |
| <b>315</b> | 352 | 200 | ○ | <b>372.739.16.1</b> |

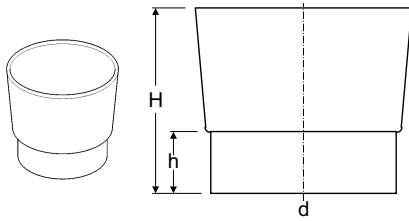
## Contraction sleeves



### Contraction sleeves complete with seal

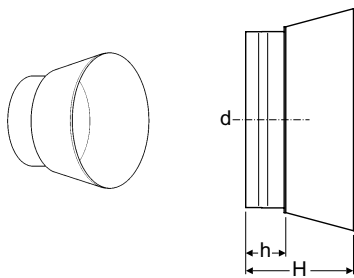
| d          | di  | AB      | AB1     | H   | h   | h1  | K   |   | Art. No.            |
|------------|-----|---------|---------|-----|-----|-----|-----|---|---------------------|
| <b>50</b>  | 60  | 53-54   | 48-49   | 300 | 240 | 60  | 170 | ▲ | <b>152.651.16.1</b> |
|            | 73  | 60-67   | 53-60   | 275 | 220 | 55  | 170 | ▲ | <b>152.197.16.1</b> |
|            | 80  | 67-74   | 60-67   | 285 | 230 | 55  | 170 | ▲ | <b>152.198.16.1</b> |
|            | 90  | 80-84   | 73-77   | 305 | 235 | 70  | 170 | ▲ | <b>152.652.16.1</b> |
| <b>56</b>  | 100 | 90-94   | 83-87   | 310 | 240 | 70  | 170 | ▲ | <b>152.653.16.1</b> |
|            | 60  | 53-54   | 48-49   | 265 | 205 | 60  | 140 | ▲ | <b>152.654.16.1</b> |
|            | 73  | 60-67   | 53-60   | 245 | 190 | 55  | 140 | ▲ | <b>152.149.16.1</b> |
| <b>63</b>  | 80  | 67-74   | 60-67   | 245 | 190 | 55  | 140 | ▲ | <b>152.150.16.1</b> |
|            | 73  | 60-67   | 53-60   | 265 | 205 | 60  | 140 | ▲ | <b>152.657.16.1</b> |
|            | 80  | 67-74   | 60-67   | 245 | 245 | 55  | 140 | ▲ | <b>152.658.16.1</b> |
| <b>75</b>  | 90  | 80-84   | 73-77   | 265 | 245 | 70  | 140 | ▲ | <b>152.659.16.1</b> |
|            | 80  | 67-74   | 60-67   | 250 | 190 | 60  | 120 | ▲ | <b>152.152.16.1</b> |
|            | 90  | 80-84   | 73-77   | 245 | 175 | 70  | 120 | ▲ | <b>152.151.16.1</b> |
| <b>90</b>  | 100 | 90-94   | 83-87   | 150 | 80  | 70  | 120 | ▲ | <b>152.661.16.1</b> |
|            | 110 | 84-98   | -       | 170 | 70  | 100 | -   | ▲ | <b>366.550.16.1</b> |
|            | 125 | 102-111 | 100-109 | 160 | 60  | 100 | -   | ▲ | <b>367.551.16.1</b> |
| <b>110</b> | 140 | 102-126 | 100-124 | 180 | 80  | 100 | 25  | ▲ | <b>367.550.16.1</b> |
|            | 125 | 116-136 | 115-134 | 180 | 80  | 100 | 10  | ▲ | <b>368.550.16.1</b> |
| <b>160</b> | 195 | 148-180 | 149-176 | 200 | 80  | 120 | 10  | ▲ | <b>369.550.16.1</b> |
|            | 230 | 189-212 | 187-220 | 300 | 140 | 180 | 50  | ▲ | <b>369.551.16.1</b> |

## Protection caps



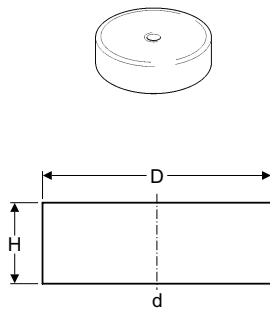
### Protection cap for WC pan connector (floor-mounted pan)

| d          | H   | h  | Art. No.            |
|------------|-----|----|---------------------|
| <b>120</b> | 120 | 40 | <b>367.897.92.1</b> |



### Protection cap for WC pan connector (wall-hung pan)

| d          | H  | h  | Art. No.            |
|------------|----|----|---------------------|
| <b>110</b> | 75 | 25 | <b>367.819.92.1</b> |



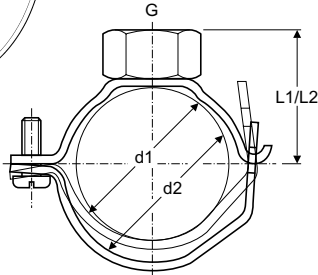
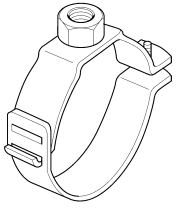
### Protection caps for pipe ends

| d          | D   | H  | Art. No.            |
|------------|-----|----|---------------------|
| <b>40</b>  | 42  | 35 | <b>360.802.92.1</b> |
| <b>50</b>  | 52  | 35 | <b>361.802.92.1</b> |
| <b>56</b>  | 58  | 35 | <b>363.802.92.1</b> |
| <b>63</b>  | 65  | 35 | <b>364.802.92.1</b> |
| <b>75</b>  | 78  | 35 | <b>365.802.92.1</b> |
| <b>90</b>  | 93  | 35 | <b>366.802.92.1</b> |
| <b>110</b> | 113 | 40 | <b>367.802.92.1</b> |
| <b>125</b> | 129 | 40 | <b>368.802.92.1</b> |
| <b>160</b> | 164 | 30 | <b>369.802.92.1</b> |

- Butt weld      ▲ Either  
 ● Electroweld    ○● Requires a combination  
    of both (see page 40)

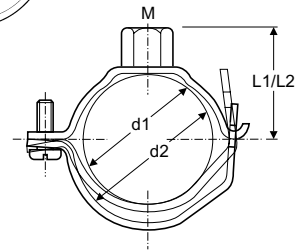
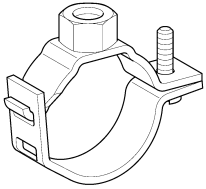
All dimensions in millimetres unless otherwise stated.

## Pipe Clips



### Adjustable pipe brackets x 1/2" BSP Thread

| d1/d2 | G    | d2  | L1 | L2 | Art. No.     |
|-------|------|-----|----|----|--------------|
| 40    | 1/2" | 48  | 35 | 39 | 360.841.00.1 |
| 50    | 1/2" | 58  | 40 | 44 | 361.841.00.1 |
| 56    | 1/2" | 64  | 43 | 47 | 363.841.00.1 |
| 63    | 1/2" | 71  | 47 | 51 | 364.841.00.1 |
| 75    | 1/2" | 83  | 53 | 57 | 365.841.00.1 |
| 90    | 1/2" | 98  | 60 | 64 | 366.841.00.1 |
| 110   | 1/2" | 118 | 70 | 74 | 367.841.00.1 |
| 125   | 1/2" | 133 | 78 | 82 | 368.841.00.1 |
| 160   | 1/2" | 168 | 95 | 99 | 369.841.00.1 |

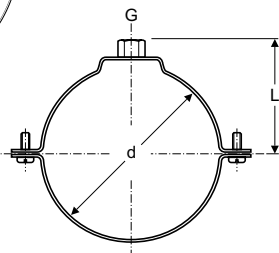
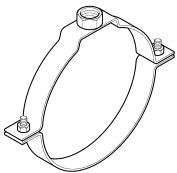


### Adjustable pipe brackets x M10 Thread

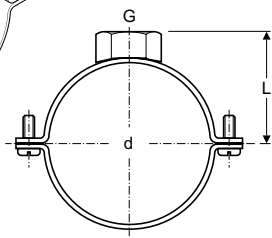
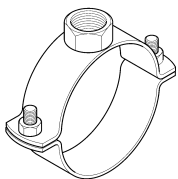
| d1/d2 | G   | d2  | L1 | L2 | Art. No.     |
|-------|-----|-----|----|----|--------------|
| 40    | M10 | 48  | 35 | 39 | 360.843.00.1 |
| 50    | M10 | 58  | 40 | 44 | 361.843.00.1 |
| 56    | M10 | 64  | 43 | 47 | 363.843.00.1 |
| 63    | M10 | 71  | 47 | 51 | 364.843.00.1 |
| 75    | M10 | 83  | 53 | 57 | 365.843.00.1 |
| 90    | M10 | 98  | 60 | 64 | 366.843.00.1 |
| 110   | M10 | 118 | 70 | 74 | 367.843.00.1 |
| 125   | M10 | 133 | 78 | 82 | 368.843.00.1 |
| 160   | M10 | 168 | 95 | 99 | 369.843.00.1 |

### Brackets with accessories

#### Brackets (galvanised) with threaded nut M10 (not to be used as anchor bracket)



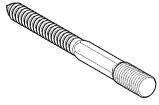
| d   | G   | L   | Art. No.     |
|-----|-----|-----|--------------|
| 40  | M10 | 40  | 360.831.00.1 |
| 50  | M10 | 45  | 361.831.00.1 |
| 56  | M10 | 50  | 363.831.00.1 |
| 63  | M10 | 55  | 364.831.00.1 |
| 75  | M10 | 60  | 365.831.00.1 |
| 90  | M10 | 65  | 366.831.00.1 |
| 110 | M10 | 75  | 367.831.00.1 |
| 125 | M10 | 80  | 368.831.00.1 |
| 160 | M10 | 100 | 369.831.00.1 |



#### Brackets (galvanised) with nut 1" (not to be used as anchor bracket)

| d   | G  | L   | Art. No.     |
|-----|----|-----|--------------|
| 200 | 1" | 148 | 370.840.00.1 |
| 250 | 1" | 173 | 371.840.00.1 |
| 315 | 1" | 205 | 372.840.00.1 |

## Pipe Clips



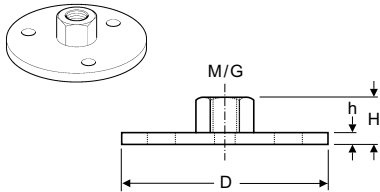
### Threaded fixing pin for wood, Length 100 mm

| Rg  | L   | Art. No.            |
|-----|-----|---------------------|
| M10 | 100 | <b>362.833.00.1</b> |



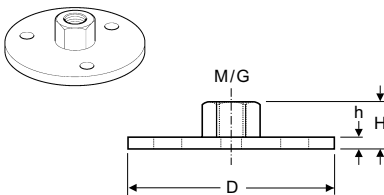
### Threaded rod M10, length 500 mm

| Rg  | L   | Art. No.            |
|-----|-----|---------------------|
| M10 | 500 | <b>362.836.00.0</b> |



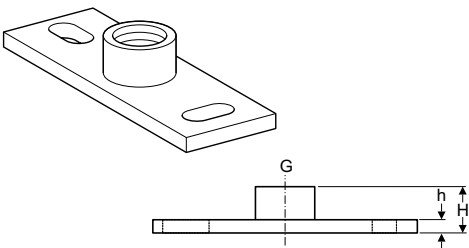
### Mounting plate with 1/2" thread

| M/G  | D  | H  | h | Art. No.            |
|------|----|----|---|---------------------|
| 1/2" | 70 | 15 | 4 | <b>362.839.26.1</b> |



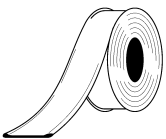
### Mounting plate with M10 thread

| M/G | D  | H  | h | Art. No.            |
|-----|----|----|---|---------------------|
| M10 | 70 | 15 | 4 | <b>362.837.26.1</b> |



### Mounting plates

| G    | H  | h | Art. No.            |
|------|----|---|---------------------|
| 1/2" | 21 | 6 | <b>362.826.26.1</b> |
| 1"   | 26 | 6 | <b>362.828.26.1</b> |



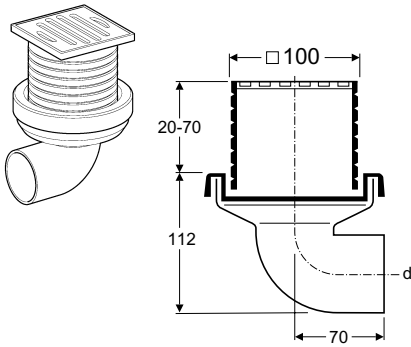
### Plastic insert strips for pipe bracket, length 10 m (not to be used as anchor bracket)

| d       | L         | Art. No.            |
|---------|-----------|---------------------|
| 40-160  | 10 Metres | <b>362.846.00.1</b> |
| 200-315 | 10 Metres | <b>370.846.00.1</b> |
| 125     | 10 Metres | <b>367.848.16.0</b> |

- Butt weld      ▲ Either  
 Electroweld      ○● Requires a combination of both (see page 40)

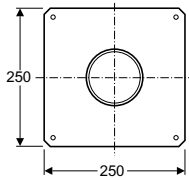
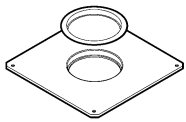
All dimensions in millimetres unless otherwise stated.

## Floor drain (terrace waste outlet)



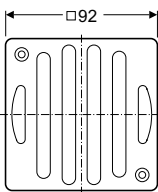
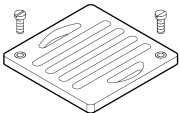
### PE floor drain 63mm diameter, without tinned flange

| d  | Art. No.     |
|----|--------------|
| 63 | 364.637.00.1 |



### Flange, tinned (25 x 25 cm)

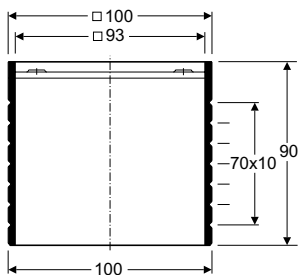
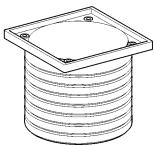
|                    | Art. No.     |
|--------------------|--------------|
| Tinned 250x250     | 388.123.24.1 |
| PVC coated 250x250 | 388.124.28.1 |



### Stainless steel square flat grating (standard)

|          | Art. No.     |
|----------|--------------|
| Standard | 854.752.00.1 |
| *Lock-up | 388.122.00.1 |

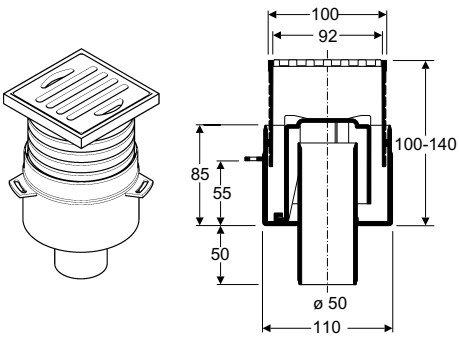
\*With screws



### Inlet funnel, PP, adjustable

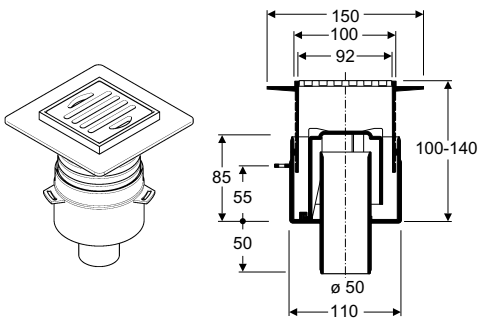
|     | Art. No.     |
|-----|--------------|
| PP  | 854.694.06.1 |
| PVC | 854.693.94.1 |

## Floor drain (terrace waste outlet)



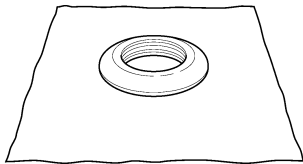
**PE floor drain outlet 50mm diameter PE funnel**

|    | d  | Art. No.            |
|----|----|---------------------|
| PE | 50 | <b>361.620.00.1</b> |



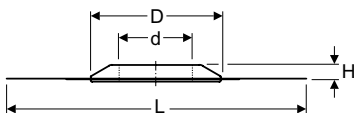
**PVC floor drain outlet 50mm diameter PVC funnel**

|     | d  | Art. No.            |
|-----|----|---------------------|
| PVC | 50 | <b>361.621.00.1</b> |



**Moisture sealings for floor penetrations**

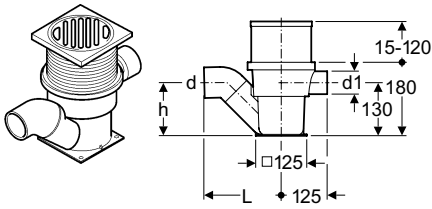
|          | d   | D   | L       | H  | Art. No.            |
|----------|-----|-----|---------|----|---------------------|
| PVC      | 110 | 195 | 500x500 | 25 | <b>367.673.00.1</b> |
| Sarnafil | 110 | 195 | 500x500 | 25 | <b>367.674.00.1</b> |



- Butt weld
- Electroweld
- ▲ Either
- Requires a combination of both (see page 40)

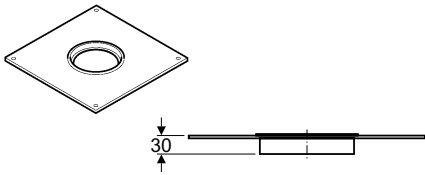
All dimensions in millimetres unless otherwise stated.

## Floor drain Varino



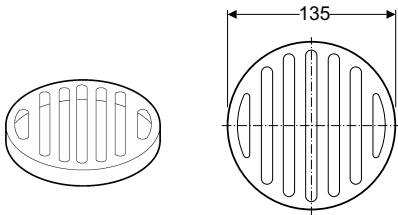
### Floor drains Varino made out of PE

| d   | d1 | h   | L   | Art. No. |                     |
|-----|----|-----|-----|----------|---------------------|
| 63  | 56 | 125 | 190 | ○        | <b>364.630.16.1</b> |
| 75  | 56 | 130 | 190 | ○        | <b>365.630.16.1</b> |
| 110 | 56 | 110 | 250 | ○        | <b>367.630.16.1</b> |



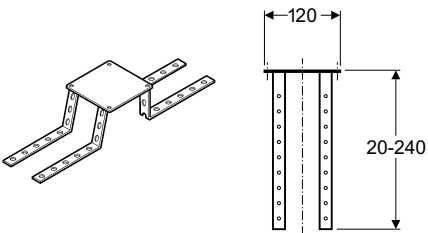
### Flange with sealing for floor drain Varino

| Material        | Dimensions | Art. No.            |
|-----------------|------------|---------------------|
| Stainless steel | 390 x 390  | <b>388.130.00.1</b> |
| PVC coated      | 390 x 390  | <b>388.131.00.1</b> |



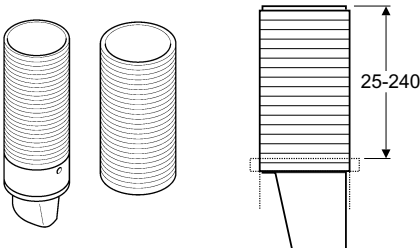
### Grating for floor drain Varino

| Material     | Capacity         | Art. No.            |
|--------------|------------------|---------------------|
| Aluminium    | Max 2 tons       | <b>388.133.00.1</b> |
| Chrome Steel | C/W fixing screw | <b>388.134.00.1</b> |



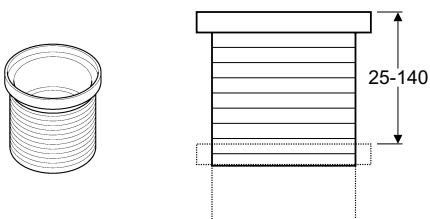
### Installation frame for floor drain Varino, adjustable in height from 18-42 cm, with screws

| Adjustment Range | Art. No.            |
|------------------|---------------------|
| 180 - 420        | <b>388.132.00.1</b> |



### Extension set for height adjustment up to 24 cm

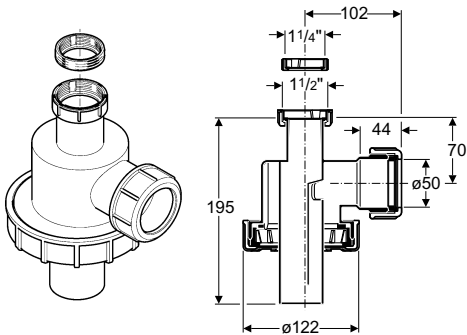
| Height Adjustment | Art. No.            |
|-------------------|---------------------|
| up to 240mm       | <b>388.136.16.1</b> |



### Extension piece (13 cm) for flange

| Height Adjustment | Art. No.            |
|-------------------|---------------------|
| up to 130mm       | <b>388.135.00.1</b> |

## Traps

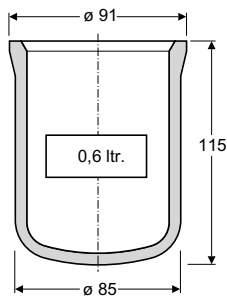


### Dilution trap for Chemical and Industrial laboratories

#### Anti-siphonic trap head

Cat. No.

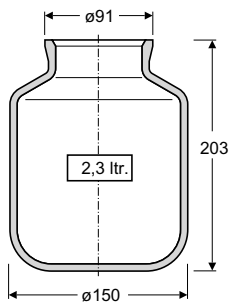
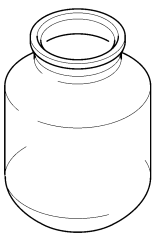
**152.090.16.1**



### Glass receiver (0.6 litre) for Dilution trap

Cat. No.

**152.095.00.1**



### Glass receiver (2.3 litre) for Dilution trap

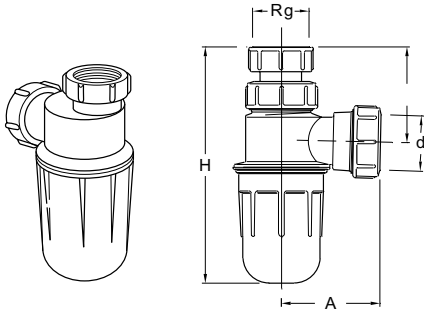
Cat. No.

**152.096.00.1**

- Buttweld
- Electroweld
- ▲ Either
- Requires a combination of both (see page 40)

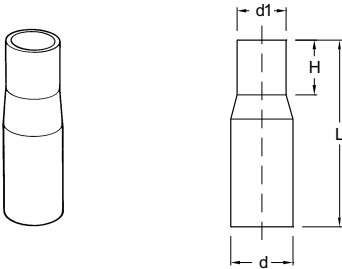
All dimensions in millimetres unless otherwise stated.

## Traps



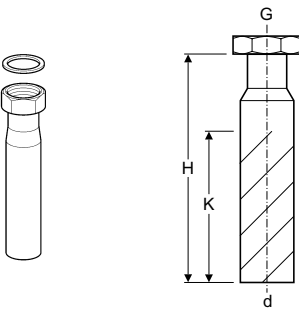
**PP Bottle Trap 1½" x 40mm**

| d  | Rg  | H   | A  | Art. No.            |
|----|-----|-----|----|---------------------|
| 40 | 1½" | 205 | 80 | <b>152.012.16.1</b> |



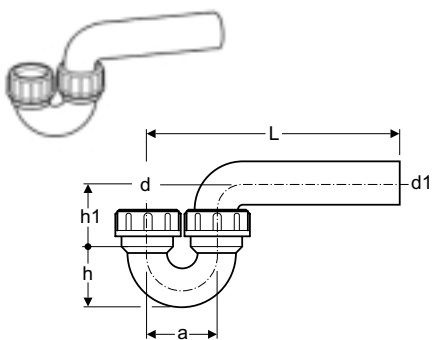
**Adaptor for 1½" traps**

| d  | d1  | L   | H  | Art. No.          |
|----|-----|-----|----|-------------------|
| 40 | 1½" | 120 | 35 | <b>5902 / PSS</b> |



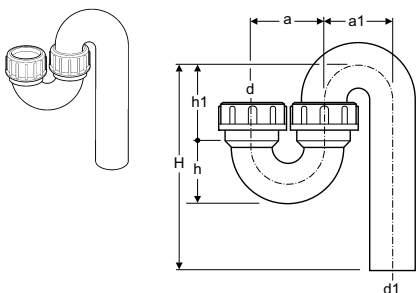
**Waste connector with female thread and seal**

| d  | G   | H   | K   | Art. No.            |
|----|-----|-----|-----|---------------------|
| 50 | 1¼" | 200 | 130 | <b>152.115.16.1</b> |
| 50 | 1½" | 200 | 130 | <b>152.113.16.1</b> |
| 50 | 2"  | 200 | 130 | <b>152.114.16.1</b> |



**P-traps**

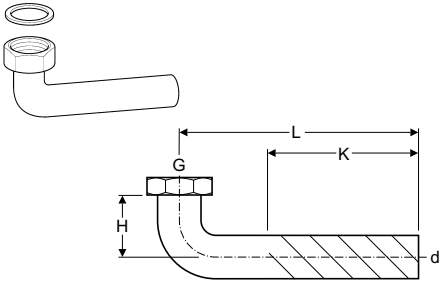
| d  | d1 | L      | h  | h1 | a  | Art. No.              |
|----|----|--------|----|----|----|-----------------------|
| 40 | 40 | 80-150 | 55 | 80 | 80 | ▲ <b>152.036.16.1</b> |
| 50 | 50 | 80-180 | 65 | 80 | 80 | ▲ <b>152.039.16.1</b> |
| 56 | 56 | 80-210 | 70 | 90 | 90 | ▲ <b>152.044.16.1</b> |



**S-traps**

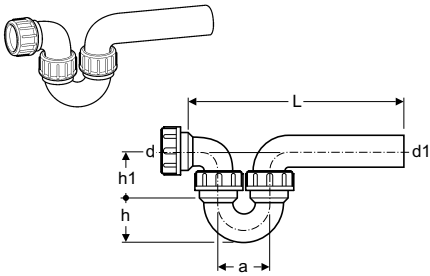
| d  | d1 | H      | h  | h1 | a  | a1 | Art. No.              |
|----|----|--------|----|----|----|----|-----------------------|
| 40 | 40 | 80-150 | 55 | 80 | 80 | 80 | ▲ <b>152.035.16.1</b> |
| 50 | 50 | 80-180 | 65 | 80 | 80 | 80 | ▲ <b>152.038.16.1</b> |
| 56 | 56 | 80-210 | 70 | 90 | 90 | 90 | ▲ <b>152.042.16.1</b> |

# Traps



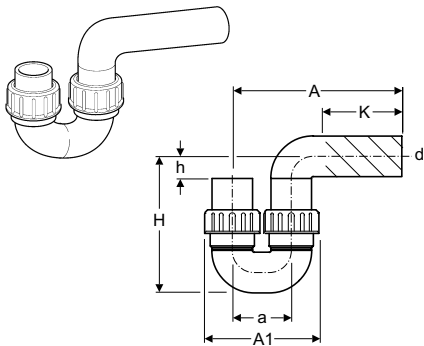
## Bent waste connector with female thread and seal

| d  | G   | H  | K   | L   |   | Art. No.     |
|----|-----|----|-----|-----|---|--------------|
| 50 | 1¼" | 70 | 100 | 180 | ▲ | 152.116.16.1 |
| 50 | 1½" | 70 | 100 | 180 | ▲ | 152.119.16.1 |
| 50 | 2"  | 65 | 100 | 245 | ▲ | 152.120.16.1 |



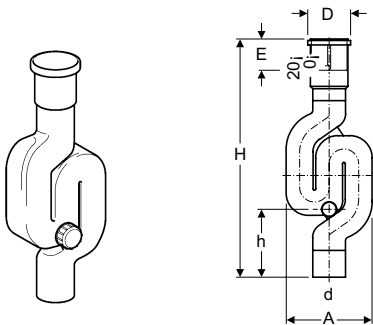
## Running traps

| d  | d1 | L       | h  | h1 | a  |   | Art. No.     |
|----|----|---------|----|----|----|---|--------------|
| 40 | 40 | 190-260 | 55 | 80 | 80 | ▲ | 152.037.16.1 |
| 50 | 50 | 200-300 | 65 | 80 | 80 | ▲ | 152.040.16.1 |
| 56 | 56 | 250-380 | 70 | 90 | 90 | ▲ | 152.046.16.1 |



## Traps with flange bushings

| d   | A   | A1  | a   | H   | h  | h1 | K   |   | Art. No.     |
|-----|-----|-----|-----|-----|----|----|-----|---|--------------|
| 63  | 305 | 185 | 95  | 205 | 50 | 34 | 160 | ▲ | 364.730.16.1 |
| 75  | 345 | 250 | 135 | 295 | 70 | 34 | 140 | ▲ | 365.730.16.1 |
| 90  | 41  | 270 | 140 | 270 | 50 | 56 | 200 | ▲ | 366.730.16.1 |
| 110 | 46  | 310 | 160 | 315 | 60 | 56 | 220 | ▲ | 367.730.16.1 |



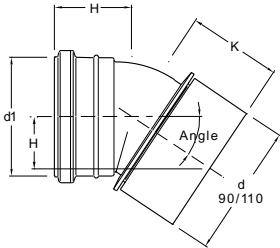
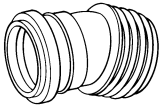
## Traps for rainwater stacks with expansion socket and cleaning opening

| d   | D   | A   | E   | H   | h   |   | Art. No.     |
|-----|-----|-----|-----|-----|-----|---|--------------|
| 75  | 105 | 198 | 105 | 655 | 167 | ▲ | 365.813.16.1 |
| 110 | 144 | 288 | 105 | 784 | 228 | ▲ | 367.813.16.1 |

- Butt weld
- Electroweld
- ▲ Either
- Requires a combination of both (see page 40)

All dimensions in millimetres unless otherwise stated.

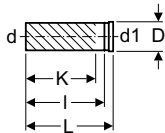
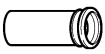
## Pan Connectors



### Duofix angled connectors

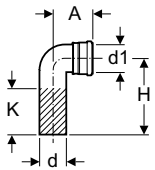
| d  | Angle | d1 | A  | K  | H  | Art. No.            |
|----|-------|----|----|----|----|---------------------|
| 90 | 5°    | 90 | 53 | 69 | 6  | <b>366.066.16.1</b> |
| 90 | 9°    | 90 | 54 | 73 | 9  | <b>366.067.16.1</b> |
| 90 | 14°   | 90 | 55 | 76 | 18 | <b>366.068.16.1</b> |
| 90 | 18°   | 90 | 58 | 79 | 24 | <b>366.069.16.1</b> |
| 90 | 22°   | 90 | 60 | 85 | 32 | <b>366.070.16.1</b> |
| 90 | 26°   | 90 | 60 | 91 | 40 | <b>366.071.16.1</b> |

Also available in PVC - see Terrain Soil & Waste Product Guide



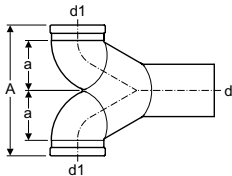
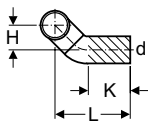
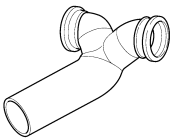
### Duofix straight connectors

| d   | d1 | D   | L   | I   | K     | Art. No.            |
|-----|----|-----|-----|-----|-------|---------------------|
| 90  | 90 | 112 | 310 | 275 | 240 ▲ | <b>366.887.16.1</b> |
| 110 | 90 | 112 | 345 | 315 | 280 ▲ | <b>367.887.16.1</b> |



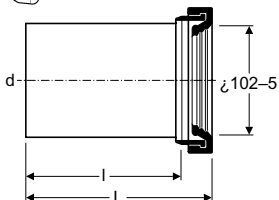
### Duofix 90° bent connectors

| d   | d1 | A   | H   | K     | Art. No.            |
|-----|----|-----|-----|-------|---------------------|
| 90  | 90 | 110 | 225 | 130 ▲ | <b>366.061.16.1</b> |
| 110 | 90 | 121 | 225 | 130 ▲ | <b>367.070.16.1</b> |



### Duofix double outlet bend

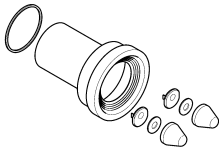
| d   | d1 | A   | a   | H   | L   | K     | Art. No.            |
|-----|----|-----|-----|-----|-----|-------|---------------------|
| 110 | 90 | 275 | 105 | 100 | 340 | 120 ▲ | <b>367.485.16.1</b> |



### Straight WC connector

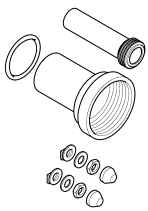
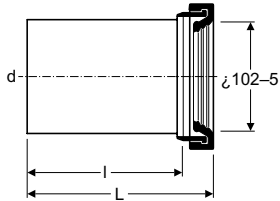
| d  | L   | I   | Art. No.            |
|----|-----|-----|---------------------|
| 90 | 180 | 145 | <b>152.487.46.1</b> |

## Pan Connectors



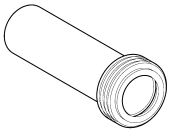
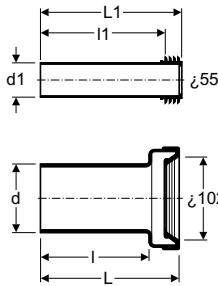
### Straight WC connector

| d          | L   | l   | Art. No.            |
|------------|-----|-----|---------------------|
| <b>110</b> | 185 | 145 | <b>152.400.16.1</b> |



### Straight WC connector C/W flush pipe

| d         | d1 | L   | L1  | l   | l1  | Art. No.            |
|-----------|----|-----|-----|-----|-----|---------------------|
| <b>90</b> | 45 | 185 | 185 | 145 | 160 | <b>152.404.46.1</b> |
| <b>90</b> | 45 | 265 | 265 | 220 | 240 | <b>152.438.46.1</b> |



### Spare flush pipe

| d         | L   | l   | Art. No.            |
|-----------|-----|-----|---------------------|
| <b>45</b> | 185 | 160 | <b>152.434.16.1</b> |



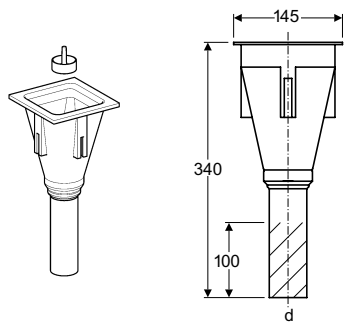
### Rubber collar

| Art. No.            |
|---------------------|
| <b>152.424.00.1</b> |

- Buttweld
- Electroweld
- ▲ Either
- Requires a combination of both (see page 40)

All dimensions in millimetres unless otherwise stated.

## Laboratory wastes



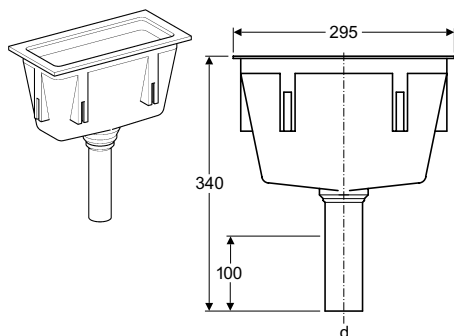
### Laboratory waste, square, 145 × 145 mm, with strainer (grey PP)

| d  | Colour | Art. No.     |
|----|--------|--------------|
| 50 | Grey   | 352.388.08.1 |



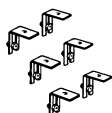
### Fixing brackets for square waste including 4 adjustable stainless steel angles and screws

| Art. No.     |
|--------------|
| 352.367.00.1 |



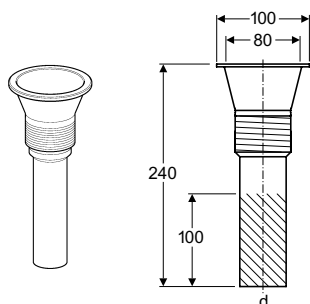
### Laboratory waste, rectangular, 295 × 145 mm, with strainer

| d  | Colour | Art. No.     |
|----|--------|--------------|
| 50 | Grey   | 352.389.08.1 |



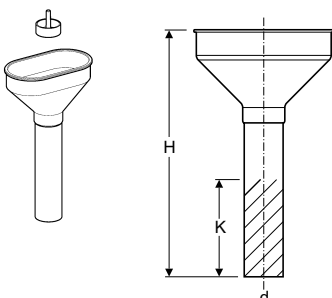
### Fixing brackets for rectangular waste, including 6 adjustable stainless steel angles and screws

| Art. No.     |
|--------------|
| 352.368.00.1 |



### Round laboratory funnel, with thread 60 mm × 1/8", with strainer (grey PP) with backnut and rubber seal

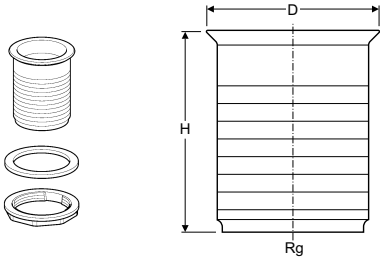
| d  | Colour | Art. No.     |
|----|--------|--------------|
| 50 | Grey   | 352.390.08.1 |



### Oval laboratory funnel with strainer (black PE)

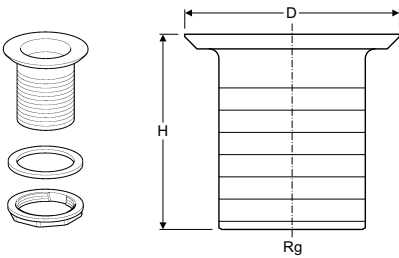
| d  | H   | K  | Colour | Art. No.     |
|----|-----|----|--------|--------------|
| 50 | 250 | 90 | Black  | 352.379.16.1 |

## Laboratory wastes



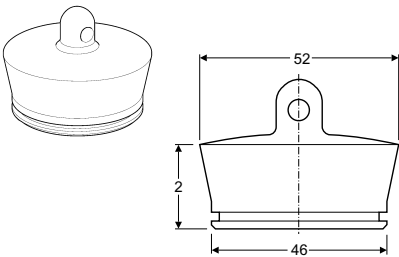
### Waste 60mm x 1/2 for Stainless Steel Sink

| Rg      | D  | H  | Colour | Art. No.            |
|---------|----|----|--------|---------------------|
| 60x1/2" | 70 | 80 | Grey   | <b>352.328.08.1</b> |



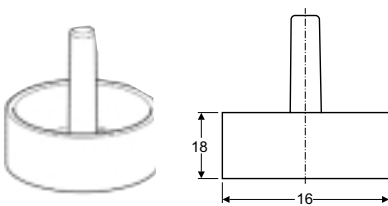
### Waste 60mm x 1/2 for Vitrified Clay Sink

| Rg      | D  | H  | Colour | Art. No.            |
|---------|----|----|--------|---------------------|
| 60x1/2" | 88 | 80 | Grey   | <b>352.329.08.1</b> |



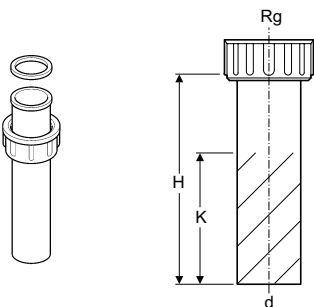
### Plug for Wastes with 60x1/2 Thread

| Colour | Art. No.            |
|--------|---------------------|
| Grey   | <b>352.331.08.1</b> |



### Grated waste with stem for 352.328 & 352.329

| Colour | Art. No.            |
|--------|---------------------|
| Grey   | <b>352.332.08.1</b> |



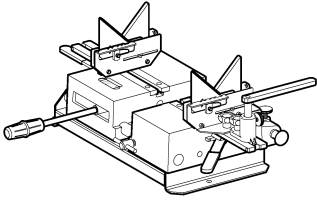
### Waste adaptor for 352.328 & 352.329

| d         | Rg      | H   | K     | Art. No.            |
|-----------|---------|-----|-------|---------------------|
| <b>50</b> | 60x1/2" | 200 | 130 ▲ | <b>152.162.16.1</b> |

- Butt weld
- Electroweld
- ▲ Either
- Requires a combination of both (see page 40)

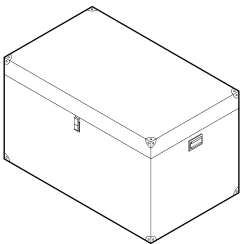
All dimensions in millimetres unless otherwise stated.

## Geberit Welding appliances



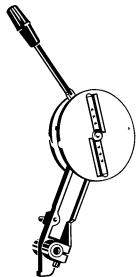
### Welding machine «Media» complete with transport case ø50-160mm

| d      | Art. No.     |
|--------|--------------|
| 40-160 | 359.662.00.1 |



### Wooden transport case (Spare Media)

| Art. No.     |
|--------------|
| 359.663.00.1 |

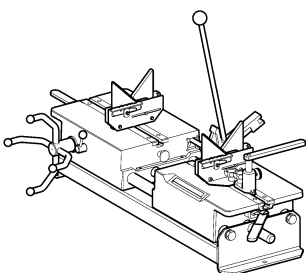
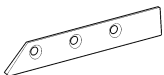


### Hand-operated plane

| d      | Machine used on   | Art. No.     |
|--------|-------------------|--------------|
| 40-160 | Media & Universal | 359.799.00.0 |

### Replacement blades for 359.046.00.1

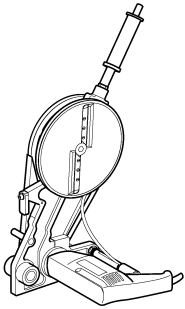
|       | Art. No.     |
|-------|--------------|
| Right | 358.760.00.1 |
| Left  | 358.759.00.1 |



### Welding machine «Universal» complete with transport case ø50-315mm

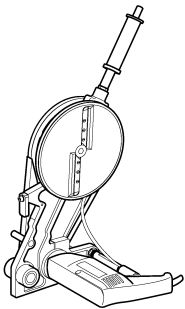
| d      | Art. No.     |
|--------|--------------|
| 50-315 | 356.201.00.1 |

## Geberit Welding appliances



### Electric plane (240v)

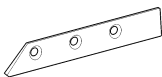
| d              | Machine used on | Art. No.            |
|----------------|-----------------|---------------------|
| <b>50 -160</b> | Media           | <b>359.046.00.1</b> |



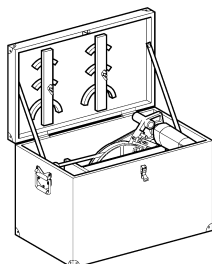
### Electric plane (240v)

| d              | Machine used on | Voltage | Art. No.            |
|----------------|-----------------|---------|---------------------|
| <b>40-160</b>  | Universal       | 230v    | <b>359.082.00.1</b> |
| <b>200-315</b> | Universal       | 230v    | <b>359.060.00.0</b> |

### Replacement blades for 359.082.00.1



|             | Art. No.            |
|-------------|---------------------|
| Outer right | <b>358.760.00.1</b> |
| Outer left  | <b>358.759.00.1</b> |
| Inner right | <b>357.599.00.1</b> |
| Inner left  | <b>357.600.00.1</b> |

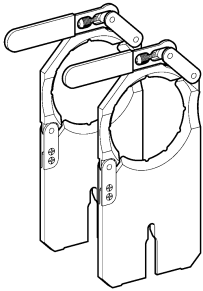


### Set of accessories Ø 200 to 315mm

| d              | Voltage | Art. No.            |
|----------------|---------|---------------------|
| <b>200-315</b> | 240v    | <b>359.009.00.1</b> |

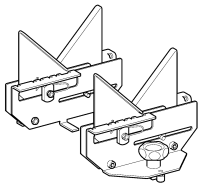
All dimensions in millimetres unless otherwise stated.

## Geberit Welding appliances



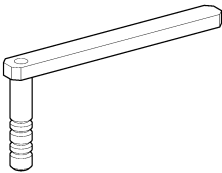
### Tension devices

| d   | Art. No.     |
|-----|--------------|
| 50  | 359.818.00.1 |
| 56  | 359.811.00.1 |
| 63  | 359.809.00.1 |
| 75  | 359.812.00.1 |
| 90  | 359.813.00.1 |
| 110 | 359.814.00.1 |
| 125 | 359.819.00.1 |
| 160 | 359.816.00.1 |



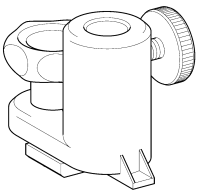
### Pipe support prims

| d      | Art. No.     |
|--------|--------------|
| 50-160 | 359.802.00.1 |



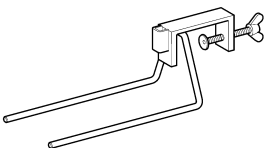
### Turnable pipe supports

| d      | Art. No.     |
|--------|--------------|
| 75-125 | 358.729.00.1 |
| 160    | 359.805.00.0 |



### Sockets

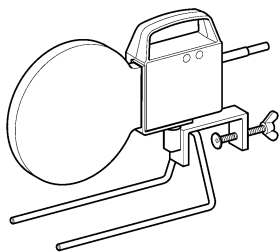
| Art. No.     |
|--------------|
| 356.831.00.1 |



### Combi holder for KSS 160 + 200

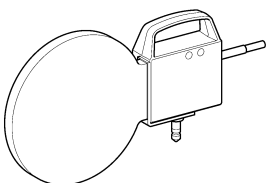
| Art. No.     |
|--------------|
| 359.886.00.1 |

## Geberit Welding appliances



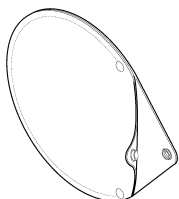
### Welding plate, Geberit KSS-160,

| d             | Machine used on   | Voltage | Wattage | Art. No.            |
|---------------|-------------------|---------|---------|---------------------|
| <b>40-160</b> | Media & Universal | 230v    | 600w    | <b>359.641.00.1</b> |
| <b>40-160</b> | Media & Universal | 110v    | 600w    | <b>359.642.00.1</b> |



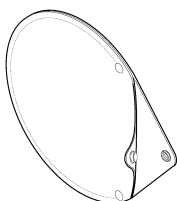
### Welding plate, Geberit KSS-200,

| d             | Machine used on | Voltage | Wattage | Art. No.            |
|---------------|-----------------|---------|---------|---------------------|
| <b>50-200</b> | Universal       | 230v    | 600w    | <b>359.665.00.1</b> |
| <b>50-200</b> | Universal       | 110v    | 600w    | <b>359.643.00.1</b> |



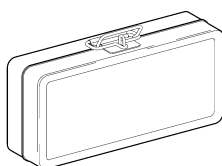
### Protection leather case for KSS-160

|  |  |  |  | Art. No.            |
|--|--|--|--|---------------------|
|  |  |  |  | <b>359.684.00.1</b> |



### Protection leather case for KSS-200

|  |  |  |  | Art. No.            |
|--|--|--|--|---------------------|
|  |  |  |  | <b>359.696.00.1</b> |



### Metal case for KSS-160

|  |  |  |  | Art. No.            |
|--|--|--|--|---------------------|
|  |  |  |  | <b>359.683.00.1</b> |

All dimensions in millimetres unless otherwise stated.

## Geberit Welding appliances



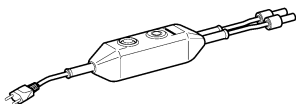
### Electrofusion machine ESG 160/90,

| d             | Voltage | Wattage | Art. No.            |
|---------------|---------|---------|---------------------|
| <b>40-160</b> | 230v    | 1100w   | <b>356.220.00.1</b> |
| <b>40-160</b> | 110v    | 1100w   | <b>356.224.00.1</b> |



### Sleeve connection set

| Length   | Art. No.            |
|----------|---------------------|
| 4 Metres | <b>220.004.00.1</b> |



### Start switch 230 V

| d              | Voltage | Wattage | Art. No.            |
|----------------|---------|---------|---------------------|
| <b>200-315</b> | 230v    | 2400w   | <b>356.177.00.1</b> |

### Accessories for electroweldings

for «start switch» 356.177, Ø 200 mm,  
Ø 250 mm, Ø 315 mm complete,  
consisting of

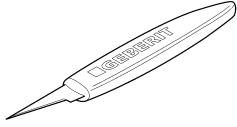
|                            |              |
|----------------------------|--------------|
|                            | Art. No.     |
| Wooden transport case      | 356.117.00.0 |
| 2 pressure rings, Ø 200 mm | 356.100.00.0 |
| 2 pressure rings, Ø 250 mm | 356.102.00.0 |
| 2 pressure rings, Ø 315 mm | 356.103.00.0 |
| 1 scraper                  | 356.118.00.0 |
| 1 deburring tool           | 359.720.00.0 |
| 1 grease pencil            | 958.782.00.1 |
| 1 two-meter ruler          | 359.913.00.0 |
| 1 set of instructions      | 996.127.00.0 |

Art. No.

**356.116.00.1**

## Geberit Welding appliances

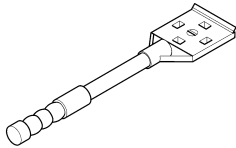
### Knife (deburring tool)



Art. No.

**359.720.00.0**

### Scraper



Art. No.

**356.118.00.1**

### Grease pencil, yellow



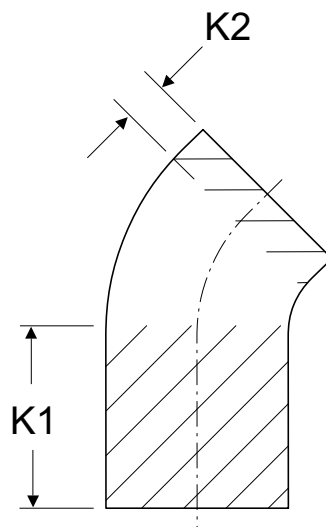
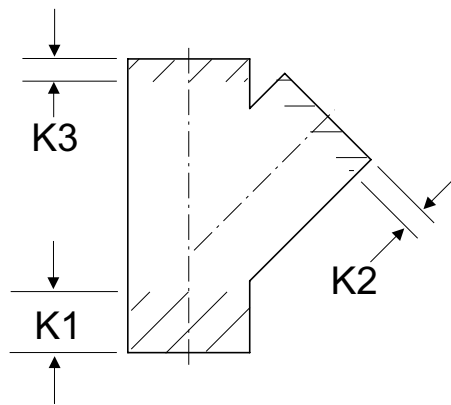
Art. No.

**958.782.00.1**

**Please note that butt welding is required if K is less than the values shown below**

| Pipe Diameter in millimetres | Depth required for Electrofusion socket (K value) |
|------------------------------|---|
| 40 - 160                     | 28mm (min)  |
| 200 - 315                    | 75mm (min)  |

This applies to all fittings with a K value



# Index

| Art. No.     | Page No. | Art. No.     | Page No. | Art. No.     | Page No. | Art. No.     | Page No. |
|--------------|----------|--------------|----------|--------------|----------|--------------|----------|
| 152.012.16.1 | 28       | 352.328.08.1 | 33       | 359.684.00.1 | 37       | 361.719.16.1 | 18       |
| 152.035.16.1 | 28       | 352.329.08.1 | 33       | 359.696.00.1 | 37       | 361.720.16.1 | 18       |
| 152.036.16.1 | 28       | 352.331.08.1 | 33       | 359.720.00.0 | 39       | 361.721.16.1 | 18       |
| 152.037.16.1 | 29       | 352.332.08.1 | 33       | 359.799.00.0 | 34       | 361.722.16.1 | 18       |
| 152.038.16.1 | 28       | 352.367.00.1 | 32       | 359.802.00.1 | 36       | 361.723.16.1 | 18       |
| 152.039.16.1 | 28       | 352.368.00.1 | 32       | 359.805.00.0 | 36       | 361.726.16.1 | 18       |
| 152.040.16.1 | 29       | 352.379.16.1 | 32       | 359.809.00.1 | 36       | 361.727.16.1 | 18       |
| 152.042.16.1 | 28       | 352.388.08.1 | 32       | 359.811.00.1 | 36       | 361.740.16.1 | 16       |
| 152.044.16.1 | 28       | 352.389.08.1 | 32       | 359.812.00.1 | 36       | 361.742.00.1 | 14       |
| 152.046.16.1 | 29       | 352.390.08.1 | 32       | 359.813.00.1 | 36       | 361.743.26.1 | 15       |
| 152.090.16.1 | 27       | 352.395.16.1 | 17       | 359.814.00.1 | 36       | 361.744.16.1 | 14       |
| 152.095.00.1 | 27       | 352.396.16.1 | 17       | 359.816.00.1 | 36       | 361.745.00.1 | 14       |
| 152.096.00.1 | 27       | 352.397.16.1 | 17       | 359.818.00.1 | 36       | 361.748.00.1 | 15       |
| 152.113.16.1 | 28       | 356.116.00.1 | 38       | 359.819.00.1 | 36       | 361.750.16.1 | 16       |
| 152.114.16.1 | 28       | 356.118.00.1 | 39       | 359.886.00.1 | 36       | 361.771.16.1 | 12       |
| 152.115.16.1 | 28       | 356.177.00.1 | 38       | 360.000.16.0 | 2        | 361.772.16.1 | 15       |
| 152.116.16.1 | 29       | 356.201.00.1 | 34       | 360.045.16.1 | 4        | 361.779.16.1 | 13       |
| 152.119.16.1 | 29       | 356.220.00.1 | 38       | 360.055.16.1 | 4        | 361.781.16.1 | 16       |
| 152.120.16.1 | 29       | 356.224.00.1 | 38       | 360.108.16.1 | 6        | 361.802.92.1 | 21       |
| 152.149.16.1 | 20       | 356.831.00.1 | 36       | 360.109.16.1 | 6        | 361.812.16.1 | 12       |
| 152.150.16.1 | 20       | 357.599.00.1 | 35       | 360.158.16.1 | 8        | 361.831.00.1 | 22       |
| 152.150.16.1 | 20       | 357.600.00.1 | 35       | 360.158.16.1 | 8        | 361.841.00.1 | 22       |
| 152.151.16.1 | 20       | 358.729.00.1 | 36       | 360.557.16.1 | 2        | 361.843.00.1 | 22       |
| 152.152.16.1 | 20       | 358.759.00.1 | 34       | 360.700.16.1 | 13       | 361.872.16.1 | 5        |
| 152.162.16.1 | 33       | 358.759.00.1 | 35       | 360.719.16.1 | 18       | 361.929.16.1 | 12       |
| 152.174.16.1 | 17       | 358.760.00.1 | 34       | 360.720.16.1 | 18       | 361.930.16.1 | 13       |
| 152.175.16.1 | 17       | 358.760.00.1 | 35       | 360.721.16.1 | 18       | 362.826.26.1 | 23       |
| 152.176.16.1 | 17       | 359.009.00.1 | 35       | 360.740.16.1 | 16       | 362.828.26.1 | 23       |
| 152.177.16.1 | 17       | 359.046.00.1 | 35       | 360.750.16.1 | 16       | 362.833.00.1 | 23       |
| 152.178.16.1 | 17       | 359.060.00.0 | 35       | 360.771.16.1 | 12       | 362.836.00.0 | 23       |
| 152.179.16.1 | 17       | 359.082.00.1 | 35       | 360.772.16.1 | 15       | 362.837.26.1 | 23       |
| 152.180.16.1 | 17       | 359.260.16.1 | 19       | 360.779.16.1 | 13       | 362.839.26.1 | 23       |
| 152.181.16.1 | 17       | 359.261.16.1 | 19       | 360.781.16.1 | 16       | 362.846.00.1 | 23       |
| 152.184.16.1 | 17       | 359.262.16.1 | 19       | 360.802.92.1 | 21       | 363.000.16.0 | 2        |
| 152.197.16.1 | 20       | 359.263.16.1 | 19       | 360.812.16.1 | 12       | 363.045.16.1 | 4        |
| 152.198.16.1 | 20       | 359.264.16.1 | 19       | 360.831.00.1 | 22       | 363.055.16.1 | 4        |
| 152.400.16.1 | 31       | 359.265.16.1 | 19       | 360.841.00.1 | 22       | 363.088.16.1 | 5        |
| 152.404.46.1 | 31       | 359.266.16.1 | 19       | 360.843.00.1 | 22       | 363.112.16.1 | 6        |
| 152.424.00.1 | 31       | 359.267.16.1 | 19       | 360.843.00.1 | 22       | 363.115.16.1 | 6        |
| 152.434.16.1 | 31       | 359.268.16.1 | 19       | 361.000.16.0 | 2        | 363.162.16.1 | 8        |
| 152.438.46.1 | 31       | 359.309.00.1 | 18       | 361.045.16.1 | 4        | 363.165.16.1 | 8        |
| 152.465.00.1 | 19       | 359.311.00.1 | 18       | 361.055.16.1 | 4        | 363.462.16.1 | 7        |
| 152.487.46.1 | 30       | 359.313.00.1 | 18       | 361.088.16.1 | 5        | 363.465.16.1 | 7        |
| 152.651.16.1 | 20       | 359.316.00.1 | 18       | 361.109.16.1 | 6        | 363.558.16.1 | 3        |
| 152.652.16.1 | 20       | 359.330.00.1 | 18       | 361.112.16.1 | 6        | 363.559.16.1 | 2        |
| 152.653.16.1 | 20       | 359.341.00.1 | 19       | 361.159.16.1 | 8        | 363.560.16.1 | 2        |
| 152.654.16.1 | 20       | 359.421.00.1 | 19       | 361.162.16.1 | 8        | 363.561.16.1 | 3        |
| 152.657.16.1 | 20       | 359.423.00.1 | 19       | 361.459.16.1 | 7        | 363.700.16.1 | 13       |
| 152.658.16.1 | 20       | 359.641.00.1 | 37       | 361.462.16.1 | 7        | 363.724.16.1 | 18       |
| 152.659.16.1 | 20       | 359.642.00.1 | 37       | 361.557.16.1 | 2        | 363.728.16.1 | 18       |
| 152.661.16.1 | 20       | 359.643.00.1 | 37       | 361.558.16.1 | 3        | 363.740.16.1 | 16       |
| 152.973.00.1 | 17       | 359.662.00.1 | 34       | 361.559.16.1 | 2        | 363.742.00.1 | 14       |
| 152.978.00.1 | 17       | 359.663.00.1 | 34       | 361.620.00.1 | 25       | 363.744.16.1 | 14       |
| 152.979.00.1 | 17       | 359.665.00.1 | 37       | 361.621.00.1 | 25       | 363.745.00.1 | 14       |
| 220.004.00.1 | 38       | 359.683.00.1 | 37       | 361.700.16.1 | 13       | 363.748.00.1 | 15       |

| Art. No.     | Page No. | Art. No.     | Page No. | Art. No.     | Page No. | Art. No.     | Page No. |
|--------------|----------|--------------|----------|--------------|----------|--------------|----------|
| 363.749.16.1 | 17       | 364.873.16.1 | 5        | 365.989.16.1 | 12       | 367.045.16.1 | 4        |
| 363.750.16.1 | 16       | 364.874.16.1 | 5        | 366.000.16.0 | 2        | 367.046.16.1 | 4        |
| 363.771.16.1 | 12       | 364.929.16.1 | 12       | 366.045.16.1 | 4        | 367.055.16.1 | 4        |
| 363.772.16.1 | 15       | 364.930.16.1 | 13       | 366.055.16.1 | 4        | 367.070.16.1 | 30       |
| 363.779.16.1 | 13       | 364.989.16.1 | 12       | 366.061.16.1 | 30       | 367.088.16.1 | 5        |
| 363.781.16.1 | 16       | 365.000.16.0 | 2        | 366.066.16.1 | 30       | 367.109.16.1 | 6        |
| 363.802.92.1 | 21       | 365.045.16.1 | 4        | 366.067.16.1 | 30       | 367.112.16.1 | 6        |
| 363.812.16.1 | 12       | 365.046.16.1 | 4        | 366.068.16.1 | 30       | 367.115.16.1 | 6        |
| 363.831.00.1 | 22       | 365.055.16.1 | 4        | 366.069.16.1 | 30       | 367.120.16.1 | 6        |
| 363.841.00.1 | 22       | 365.088.16.1 | 5        | 366.070.16.1 | 30       | 367.125.16.1 | 6        |
| 363.843.00.1 | 22       | 365.109.16.1 | 6        | 366.071.16.1 | 30       | 367.130.16.1 | 6        |
| 363.873.16.1 | 5        | 365.112.16.1 | 6        | 366.088.16.1 | 5        | 367.135.16.1 | 6        |
| 363.929.16.1 | 12       | 365.115.16.1 | 6        | 366.109.16.1 | 6        | 367.159.16.1 | 8        |
| 363.930.16.1 | 13       | 365.120.16.1 | 6        | 366.112.16.1 | 6        | 367.162.16.1 | 8        |
| 363.931.16.1 | 16       | 365.125.16.1 | 6        | 366.115.16.1 | 6        | 367.163.16.1 | 8        |
| 363.932.16.1 | 16       | 365.159.16.1 | 8        | 366.120.16.1 | 6        | 367.165.16.1 | 8        |
| 364.000.16.0 | 2        | 365.162.16.1 | 8        | 366.125.16.1 | 6        | 367.170.16.1 | 8        |
| 364.045.16.1 | 4        | 365.165.16.1 | 8        | 366.130.16.1 | 6        | 367.175.16.1 | 8        |
| 364.055.16.1 | 4        | 365.170.16.1 | 8        | 366.159.16.1 | 8        | 367.180.16.1 | 8        |
| 364.088.16.1 | 5        | 365.175.16.1 | 8        | 366.162.16.1 | 8        | 367.185.16.1 | 8        |
| 364.109.16.1 | 6        | 365.275.16.1 | 10       | 366.165.16.1 | 8        | 367.209.16.1 | 7        |
| 364.112.16.1 | 6        | 365.325.16.1 | 10       | 366.170.16.1 | 8        | 367.212.16.1 | 7        |
| 364.115.16.1 | 6        | 365.375.16.1 | 10       | 366.175.16.1 | 8        | 367.235.16.1 | 7        |
| 364.120.16.1 | 6        | 365.451.16.1 | 9        | 366.180.16.1 | 8        | 367.262.16.1 | 10       |
| 364.159.16.1 | 8        | 365.465.16.1 | 7        | 366.280.16.1 | 10       | 367.265.16.1 | 10       |
| 364.162.16.1 | 8        | 365.470.16.1 | 7        | 366.330.16.1 | 10       | 367.270.16.1 | 10       |
| 364.165.16.1 | 8        | 365.558.16.1 | 3        | 366.380.16.1 | 10       | 367.275.16.1 | 10       |
| 364.170.16.1 | 8        | 365.559.16.1 | 2        | 366.451.16.1 | 9        | 367.280.16.1 | 10       |
| 364.270.16.1 | 10       | 365.560.16.1 | 2        | 366.550.16.1 | 20       | 367.285.16.1 | 10       |
| 364.320.16.1 | 10       | 365.561.16.1 | 3        | 366.559.16.1 | 2        | 367.315.16.1 | 10       |
| 364.370.16.1 | 10       | 365.565.16.1 | 2        | 366.560.16.1 | 2        | 367.320.16.1 | 10       |
| 364.451.16.1 | 9        | 365.566.16.1 | 3        | 366.561.16.1 | 3        | 367.325.16.1 | 10       |
| 364.462.16.1 | 7        | 365.570.16.1 | 2        | 366.565.16.1 | 2        | 367.330.16.1 | 10       |
| 364.465.16.1 | 7        | 365.571.16.1 | 3        | 366.566.16.1 | 3        | 367.335.16.1 | 10       |
| 364.558.16.1 | 3        | 365.600.16.1 | 11       | 366.570.16.1 | 2        | 367.362.16.1 | 10       |
| 364.559.16.1 | 2        | 365.605.16.1 | 11       | 366.571.16.1 | 3        | 367.365.16.1 | 10       |
| 364.560.16.1 | 2        | 365.610.16.1 | 11       | 366.575.16.1 | 2        | 367.370.16.1 | 10       |
| 364.561.16.1 | 3        | 365.630.16.1 | 26       | 366.576.16.1 | 3        | 367.375.16.1 | 10       |
| 364.565.16.1 | 2        | 365.700.16.1 | 13       | 366.605.16.1 | 11       | 367.380.16.1 | 10       |
| 364.566.16.1 | 3        | 365.725.16.1 | 18       | 366.700.16.1 | 13       | 367.385.16.1 | 10       |
| 364.600.16.1 | 11       | 365.729.16.1 | 18       | 366.740.16.1 | 16       | 367.451.16.1 | 9        |
| 364.605.16.1 | 11       | 365.730.16.1 | 29       | 366.742.00.1 | 14       | 367.453.16.1 | 9        |
| 364.610.16.1 | 11       | 365.740.16.1 | 16       | 366.743.26.1 | 15       | 367.454.16.1 | 9        |
| 364.630.16.1 | 26       | 365.742.00.1 | 14       | 366.744.16.1 | 14       | 367.471.16.1 | 13       |
| 364.637.00.1 | 24       | 365.744.16.1 | 14       | 366.745.16.1 | 14       | 367.480.16.1 | 7        |
| 364.700.16.1 | 13       | 365.745.00.1 | 14       | 366.748.00.1 | 15       | 367.481.16.1 | 7        |
| 364.724.16.1 | 18       | 365.748.00.1 | 15       | 366.750.16.1 | 16       | 367.485.16.1 | 30       |
| 364.728.16.1 | 18       | 365.750.16.1 | 16       | 366.771.16.1 | 12       | 367.558.16.1 | 3        |
| 364.730.16.1 | 29       | 365.771.16.1 | 12       | 366.772.16.1 | 15       | 367.559.16.1 | 2        |
| 364.740.16.1 | 16       | 365.772.16.1 | 15       | 366.779.16.1 | 13       | 367.560.16.1 | 2        |
| 364.744.16.1 | 14       | 365.779.16.1 | 13       | 366.781.16.1 | 16       | 367.561.16.1 | 3        |
| 364.749.16.1 | 17       | 365.781.16.1 | 16       | 366.802.92.1 | 21       | 367.565.16.1 | 2        |
| 364.750.16.1 | 16       | 365.802.92.1 | 21       | 366.812.16.1 | 12       | 367.566.16.1 | 3        |
| 364.771.16.1 | 12       | 365.812.16.1 | 12       | 366.831.00.1 | 22       | 367.570.16.1 | 2        |
| 364.772.16.1 | 15       | 365.813.16.1 | 29       | 366.841.00.1 | 22       | 367.571.16.1 | 3        |
| 364.779.16.1 | 13       | 365.831.00.1 | 22       | 366.843.00.1 | 22       | 367.575.16.1 | 2        |
| 364.781.16.1 | 16       | 365.841.00.1 | 22       | 366.887.16.1 | 30       | 367.576.16.1 | 3        |
| 364.802.92.1 | 21       | 365.843.00.1 | 22       | 366.929.16.1 | 12       | 367.580.16.1 | 2        |
| 364.812.16.1 | 12       | 365.929.16.1 | 12       | 366.930.16.1 | 13       | 367.581.16.1 | 3        |
| 364.831.00.1 | 22       | 365.930.16.1 | 13       | 366.932.16.1 | 16       | 367.600.16.1 | 11       |
| 364.841.00.1 | 22       | 365.931.16.1 | 16       | 366.989.16.1 | 12       | 367.600.16.1 | 13       |
| 364.843.00.1 | 22       | 365.932.16.1 | 16       | 367.000.16.0 | 2        | 367.605.16.1 | 11       |

| Art. No.     | Page No. | Art. No.     | Page No. | Art. No.     | Page No. | Art. No.     | Page No. |
|--------------|----------|--------------|----------|--------------|----------|--------------|----------|
| 367.610.16.1 | 11       | 368.584.16.1 | 3        | 369.841.00.1 | 22       | 372.000.16.0 | 2        |
| 367.611.16.1 | 6        | 368.585.16.1 | 2        | 369.843.00.1 | 22       | 372.030.16.1 | 5        |
| 367.630.16.1 | 26       | 368.586.16.1 | 3        | 369.929.16.1 | 12       | 372.045.16.1 | 5        |
| 367.673.00.1 | 25       | 368.600.16.1 | 11       | 369.930.16.1 | 13       | 372.055.16.1 | 5        |
| 367.674.00.1 | 25       | 368.605.16.1 | 11       | 369.989.16.1 | 12       | 372.135.16.1 | 7        |
| 367.730.16.1 | 29       | 368.610.16.1 | 11       | 370.000.16.0 | 2        | 372.139.16.1 | 7        |
| 367.739.16.1 | 20       | 368.700.16.1 | 13       | 370.030.16.1 | 5        | 372.145.16.1 | 7        |
| 367.740.16.1 | 16       | 368.739.16.1 | 20       | 370.045.16.1 | 5        | 372.146.16.1 | 7        |
| 367.742.00.1 | 14       | 368.742.00.1 | 14       | 370.055.16.1 | 5        | 372.147.16.1 | 7        |
| 367.744.16.1 | 14       | 368.744.16.1 | 14       | 370.125.16.1 | 7        | 372.148.16.1 | 7        |
| 367.745.00.1 | 14       | 368.745.00.1 | 14       | 370.135.16.1 | 7        | 372.185.16.1 | 9        |
| 367.748.00.1 | 15       | 368.748.00.1 | 15       | 370.139.16.1 | 7        | 372.189.16.1 | 9        |
| 367.750.16.1 | 16       | 368.751.16.1 | 15       | 370.145.16.1 | 7        | 372.195.16.1 | 9        |
| 367.771.16.1 | 12       | 368.771.16.1 | 12       | 370.146.16.1 | 7        | 372.196.16.1 | 9        |
| 367.772.16.1 | 15       | 368.772.16.1 | 15       | 370.180.16.1 | 9        | 372.197.16.1 | 9        |
| 367.779.16.1 | 13       | 368.779.16.1 | 13       | 370.185.16.1 | 9        | 372.198.16.1 | 9        |
| 367.781.16.1 | 16       | 368.802.92.1 | 21       | 370.189.16.1 | 9        | 372.454.16.1 | 9        |
| 367.802.92.1 | 21       | 368.812.16.1 | 12       | 370.195.16.1 | 9        | 372.596.16.1 | 3        |
| 367.812.16.1 | 12       | 368.831.00.1 | 22       | 370.196.16.1 | 9        | 372.598.16.1 | 3        |
| 367.813.16.1 | 29       | 368.841.00.1 | 22       | 370.454.16.1 | 9        | 372.700.16.1 | 13       |
| 367.819.92.1 | 21       | 368.843.00.1 | 22       | 370.584.16.1 | 3        | 372.738.16.1 | 19       |
| 367.831.00.1 | 22       | 368.989.16.1 | 12       | 370.587.16.1 | 3        | 372.739.16.1 | 20       |
| 367.841.00.1 | 22       | 369.000.16.0 | 2        | 370.594.16.1 | 3        | 372.742.00.1 | 14       |
| 367.843.00.1 | 22       | 369.045.16.1 | 4        | 370.700.16.1 | 13       | 372.743.26.1 | 15       |
| 367.848.16.0 | 23       | 369.055.16.1 | 4        | 370.738.16.1 | 19       | 372.744.16.1 | 14       |
| 367.887.16.1 | 30       | 369.088.16.1 | 5        | 370.739.16.1 | 20       | 372.745.00.1 | 14       |
| 367.897.92.1 | 21       | 369.125.16.1 | 6        | 370.742.00.1 | 14       | 372.748.00.1 | 15       |
| 367.929.16.1 | 12       | 369.130.16.1 | 6        | 370.744.16.1 | 14       | 372.751.16.1 | 15       |
| 367.930.16.1 | 13       | 369.135.16.1 | 6        | 370.745.00.1 | 14       | 372.775.16.1 | 12       |
| 367.932.16.1 | 16       | 369.139.16.1 | 6        | 370.748.00.1 | 15       | 372.840.00.1 | 22       |
| 367.989.16.1 | 12       | 369.145.16.1 | 6        | 370.751.16.1 | 15       | 379.000.16.0 | 2        |
| 368.000.16.0 | 2        | 369.175.16.1 | 8        | 370.775.16.1 | 12       | 379.055.16.1 | 4        |
| 368.045.16.1 | 4        | 369.185.16.1 | 8        | 370.812.16.0 | 12       | 379.108.16.1 | 6        |
| 368.055.16.1 | 4        | 369.189.16.1 | 8        | 370.840.00.1 | 22       | 379.158.16.1 | 8        |
| 368.088.16.1 | 5        | 369.195.16.1 | 8        | 370.846.00.1 | 23       | 379.740.16.1 | 16       |
| 368.120.16.1 | 6        | 369.285.16.1 | 10       | 371.000.16.0 | 2        | 379.750.16.1 | 16       |
| 368.125.16.1 | 6        | 369.335.16.1 | 10       | 371.030.16.1 | 5        | 379.768.16.1 | 13       |
| 368.130.16.1 | 6        | 369.385.16.1 | 10       | 371.045.16.1 | 5        | 379.772.16.1 | 15       |
| 368.135.16.1 | 6        | 369.451.16.1 | 9        | 371.055.16.1 | 5        | 379.781.16.1 | 16       |
| 368.139.16.1 | 6        | 369.453.16.1 | 9        | 371.135.16.1 | 7        | 379.791.16.1 | 13       |
| 368.162.16.1 | 8        | 369.454.16.1 | 9        | 371.139.16.1 | 7        | 379.812.16.1 | 12       |
| 368.165.16.1 | 8        | 369.535.16.1 | 2        | 371.145.16.1 | 7        | 388.122.00.1 | 24       |
| 368.170.16.1 | 8        | 369.550.16.1 | 20       | 371.146.16.1 | 7        | 388.123.24.1 | 24       |
| 368.175.16.1 | 8        | 369.551.16.1 | 20       | 371.147.16.1 | 7        | 388.124.28.1 | 24       |
| 368.180.16.1 | 8        | 369.584.16.1 | 3        | 371.185.16.1 | 9        | 388.130.00.1 | 26       |
| 368.185.16.1 | 8        | 369.586.16.1 | 3        | 371.189.16.1 | 9        | 388.131.00.1 | 26       |
| 368.189.16.1 | 8        | 369.587.16.1 | 3        | 371.195.16.1 | 9        | 388.132.00.1 | 26       |
| 368.285.16.1 | 10       | 369.588.16.1 | 3        | 371.196.16.1 | 9        | 388.133.00.1 | 26       |
| 368.335.16.1 | 10       | 369.605.16.1 | 11       | 371.197.16.1 | 9        | 388.134.00.1 | 26       |
| 368.385.16.1 | 10       | 369.700.16.1 | 13       | 371.454.16.1 | 9        | 388.135.00.1 | 26       |
| 368.451.16.1 | 9        | 369.739.16.1 | 20       | 371.596.16.1 | 3        | 388.136.16.1 | 26       |
| 368.453.16.1 | 9        | 369.742.00.1 | 14       | 371.700.16.1 | 13       | 5902/PSS     | 28       |
| 368.454.16.1 | 9        | 369.743.26.1 | 15       | 371.738.16.1 | 19       | 854.693.94.1 | 24       |
| 368.550.16.1 | 20       | 369.744.16.1 | 14       | 371.739.16.1 | 20       | 854.694.06.1 | 24       |
| 368.561.16.1 | 3        | 369.745.00.1 | 14       | 371.742.00.1 | 14       | 854.752.00.1 | 24       |
| 368.566.16.1 | 3        | 369.748.00.1 | 15       | 371.743.26.1 | 15       | 958.782.00.1 | 39       |
| 368.570.16.1 | 2        | 369.771.16.1 | 12       | 371.744.16.1 | 14       |              |          |
| 368.571.16.1 | 3        | 369.772.16.1 | 15       | 371.745.00.1 | 14       |              |          |
| 368.575.16.1 | 2        | 369.779.16.1 | 13       | 371.748.00.1 | 15       |              |          |
| 368.576.16.1 | 3        | 369.802.92.1 | 21       | 371.751.16.1 | 15       |              |          |
| 368.580.16.1 | 2        | 369.812.16.1 | 12       | 371.775.16.1 | 12       |              |          |
| 368.581.16.1 | 3        | 369.831.00.1 | 22       | 371.840.00.1 | 22       |              |          |



## Pacific Pipe and Pump

18760 Ridgefield Road NW Shoreline, WA 98177

Telephone: 206-542-6372

Fax: 206-542-0532

E & OE

Specification details are liable to change without prior notice

Copyright © 2001 Geberit Ltd.

  
Advanced plumbing technology